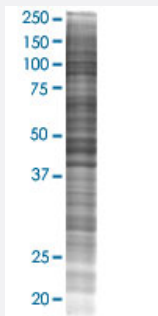


STAM2 293T Cell Transient Overexpression Lysate(Denatured)

Catalog # H00010254-T02

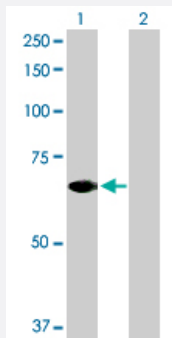
Size 100 uL

Applications



SDS-PAGE Gel

STAM2 transfected lysate.



Western Blot

Lane 1: STAM2 transfected lysate (58.20 KDa)

Lane 2: Non-transfected lysate.

Specification

Transfected Cell Line	293T
Plasmid	pCMV-STAM2 full-length
Host	Human
Theoretical MW (kDa)	58.2
Interspecies Antigen Sequence	Mouse (86); Rat (84)

Quality Control Testing

Transient overexpression cell lysate was tested with Anti-STAM2 antibody ([H00010254-D01P](#)) by Western Blots.
SDS-PAGE Gel
STAM2 transfected lysate.
Western Blot
Lane 1: STAM2 transfected lysate (58.20 KDa)
Lane 2: Non-transfected lysate.

Storage Buffer

1X Sample Buffer (50 mM Tris-HCl, 2% SDS, 10% glycerol, 300 mM 2-mercaptoethanol, 0.01% Bromophenol blue)

Storage Instruction

Store at -80°C. Aliquot to avoid repeated freezing and thawing.

Applications

- Western Blot

Gene Info — STAM2

Entrez GeneID

[10254](#)

GeneBank Accession#

[BC028740.2](#)

Protein Accession#

[AAH28740.1](#)

Gene Name

STAM2

Gene Alias

DKFZp564C047, Hbp, STAM2A, STAM2B

Gene Description

signal transducing adaptor molecule (SH3 domain and ITAM motif) 2

Omim ID

[606244](#)

Gene Ontology

[Hyperlink](#)

Gene Summary

The protein encoded by this gene is closely related to STAM, an adaptor protein involved in the downstream signaling of cytokine receptors, both of which contain a SH3 domain and the immunoreceptor tyrosine-based activation motif (ITAM). Similar to STAM, this protein acts downstream of JAK kinases, and is phosphorylated in response to cytokine stimulation. This protein and STAM thus are thought to exhibit compensatory effects on the signaling pathway downstream of JAK kinases upon cytokine stimulation. [provided by RefSeq]

Other Designations

Hrs-binding protein|STAM-like protein containing SH3 and ITAM domains 2|signal transducing adaptor molecule 2

Pathway

- [Endocytosis](#)
- [Jak-STAT signaling pathway](#)