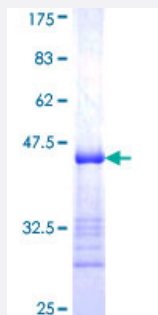


STAM2 (Human) Recombinant Protein (Q01)

Catalog # H00010254-Q01

Size 25 ug, 10 ug

Applications



Specification

Product Description	Human STAM2 partial ORF (NP_005834, 416 a.a. - 525 a.a.) recombinant protein with GST-tag at N-terminal.
Sequence	QSYSLGPDQIGPLRSLPPNVNSSVTAQPAQTSYLSGQDQTVSNPTYMNQNSNLQSATGTTAYTQQ MGMSVDMSSYQNTTSNLPQLAGFPVTVPAHPVAQQHTNYHQQPLL
Host	Wheat Germ (in vitro)
Theoretical MW (kDa)	37.84
Interspecies Antigen Sequence	Mouse (86); Rat (84)
Preparation Method	in vitro wheat germ expression system
Purification	Glutathione Sepharose 4 Fast Flow
Quality Control Testing	12.5% SDS-PAGE Stained with Coomassie Blue.
Storage Buffer	50 mM Tris-HCl, 10 mM reduced Glutathione, pH=8.0 in the elution buffer.
Storage Instruction	Store at -80°C. Aliquot to avoid repeated freezing and thawing.
Note	Best use within three months from the date of receipt of this protein.

Applications

- Enzyme-linked Immunoabsorbent Assay
- Western Blot (Recombinant protein)
- Antibody Production
- Protein Array

Gene Info — STAM2

Entrez GeneID [10254](#)

GeneBank Accession# [NM_005843](#)

Protein Accession# [NP_005834](#)

Gene Name STAM2

Gene Alias DKFZp564C047, Hbp, STAM2A, STAM2B

Gene Description signal transducing adaptor molecule (SH3 domain and ITAM motif) 2

Omim ID [606244](#)

Gene Ontology [Hyperlink](#)

Gene Summary The protein encoded by this gene is closely related to STAM, an adaptor protein involved in the downstream signaling of cytokine receptors, both of which contain a SH3 domain and the immunoreceptor tyrosine-based activation motif (ITAM). Similar to STAM, this protein acts downstream of JAK kinases, and is phosphorylated in response to cytokine stimulation. This protein and STAM thus are thought to exhibit compensatory effects on the signaling pathway downstream of JAK kinases upon cytokine stimulation. [provided by RefSeq]

Other Designations Hrs-binding protein|STAM-like protein containing SH3 and ITAM domains 2|signal transducing adaptor molecule 2

Pathway

- [Endocytosis](#)
- [Jak-STAT signaling pathway](#)