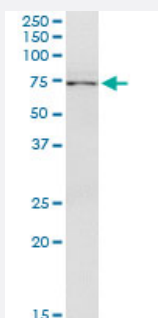


STAM2 (Human) IP-WB Antibody Pair

Catalog # H00010254-PW1

Size 1 Set

Applications



Immunoprecipitation of STAM2 transfected lysate using mouse monoclonal anti-STAM2 and Protein A Magnetic Bead ([U0007](#)), and immunoblotted with mouse monoclonal anti-STAM2.

Specification

Product Description	This IP-WB antibody pair set comes with one antibody for immunoprecipitation and another to detect the precipitated protein in western blot.
Reactivity	Human
Interspecies Antigen Sequence	Mouse (86); Rat (84)
Quality Control Testing	Immunoprecipitation-Western Blot (IP-WB) Immunoprecipitation of STAM2 transfected lysate using mouse monoclonal anti-STAM2 and Protein A Magnetic Bead (U0007), and immunoblotted with mouse monoclonal anti-STAM2.
Supplied Product	Antibody pair set content: 1. Antibody pair for IP: mouse monoclonal anti-STAM2 (300 ug) 2. Antibody pair for WB: mouse monoclonal anti-STAM2 (50 ug)
Storage Instruction	Store reagents of the antibody pair set at -20°C or lower. Please aliquot to avoid repeated freeze thaw cycle. Reagents should be returned to -20°C storage immediately after use.

Applications

- Immunoprecipitation-Western Blot

[Protocol Download](#)

Gene Info — STAM2

Entrez GeneID [10254](#)

Gene Name STAM2

Gene Alias DKFZp564C047, Hbp, STAM2A, STAM2B

Gene Description signal transducing adaptor molecule (SH3 domain and ITAM motif) 2

Omim ID [606244](#)

Gene Ontology [Hyperlink](#)

Gene Summary The protein encoded by this gene is closely related to STAM, an adaptor protein involved in the downstream signaling of cytokine receptors, both of which contain a SH3 domain and the immunoreceptor tyrosine-based activation motif (ITAM). Similar to STAM, this protein acts downstream of JAK kinases, and is phosphorylated in response to cytokine stimulation. This protein and STAM thus are thought to exhibit compensatory effects on the signaling pathway downstream of JAK kinases upon cytokine stimulation. [provided by RefSeq]

Other Designations Hrs-binding protein|STAM-like protein containing SH3 and ITAM domains 2|signal transducing adaptor molecule 2

Pathway

- [Endocytosis](#)
- [Jak-STAT signaling pathway](#)