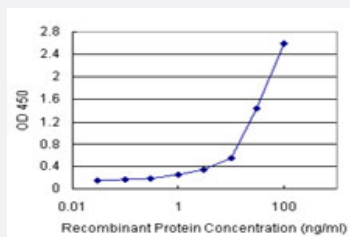


STAM2 (Human) Matched Antibody Pair

Catalog # H00010254-AP21

Size 1 Set

Applications



Sandwich ELISA detection sensitivity ranging from 1 ng/ml to 100 ng/ml.

Specification

Product Description	This antibody pair set comes with a matched antibody pair to detect and quantify the protein level of human STAM2.
Reactivity	Human
Interspecies Antigen Sequence	Mouse (86); Rat (84)
Quality Control Testing	Standard curve using recombinant protein (H00010254-P01) as an analyte. Sandwich ELISA detection sensitivity ranging from 1 ng/ml to 100 ng/ml.
Supplied Product	Antibody pair set content: 1. Capture antibody: rabbit MaxPab® affinity purified polyclonal anti-STAM2 (100 ug) 2. Detection antibody: mouse polyclonal anti-STAM2 (40 ul) *Reagents are sufficient for at least 3-5 x 96 well plates using recommended protocols.
Storage Instruction	Store reagents of the antibody pair set at -20°C or lower. Please aliquot to avoid repeated freeze thaw cycle. Reagents should be returned to -20°C storage immediately after use.

Applications

- ELISA Pair (Recombinant protein)

[Protocol Download](#)

Gene Info — STAM2

Entrez GeneID [10254](#)

Gene Name STAM2

Gene Alias DKFZp564C047, Hbp, STAM2A, STAM2B

Gene Description signal transducing adaptor molecule (SH3 domain and ITAM motif) 2

Omim ID [606244](#)

Gene Ontology [Hyperlink](#)

Gene Summary The protein encoded by this gene is closely related to STAM, an adaptor protein involved in the downstream signaling of cytokine receptors, both of which contain a SH3 domain and the immunoreceptor tyrosine-based activation motif (ITAM). Similar to STAM, this protein acts downstream of JAK kinases, and is phosphorylated in response to cytokine stimulation. This protein and STAM thus are thought to exhibit compensatory effects on the signaling pathway downstream of JAK kinases upon cytokine stimulation. [provided by RefSeq]

Other Designations Hrs-binding protein|STAM-like protein containing SH3 and ITAM domains 2|signal transducing adaptor molecule 2

Pathway

- [Endocytosis](#)
- [Jak-STAT signaling pathway](#)