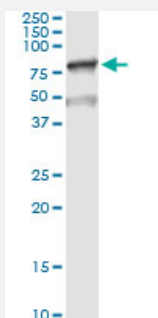


# MSLN (Human) IP-WB Antibody Pair

Catalog # H00010232-PW2

Size 1 Set

## Applications



Immunoprecipitation of MSLN transfected lysate using rabbit polyclonal anti-MSLN and Protein A Magnetic Bead ([U0007](#)), and immunoblotted with mouse purified polyclonal anti-MSLN.

## Specification

<b>Product Description</b>	This IP-WB antibody pair set comes with one antibody for immunoprecipitation and another to detect the precipitated protein in western blot.
<b>Reactivity</b>	Human
<b>Interspecies Antigen Sequence</b>	Mouse (58); Rat (57)
<b>Quality Control Testing</b>	Immunoprecipitation-Western Blot (IP-WB) Immunoprecipitation of MSLN transfected lysate using rabbit polyclonal anti-MSLN and Protein A Magnetic Bead ( <a href="#">U0007</a> ), and immunoblotted with mouse purified polyclonal anti-MSLN.
<b>Supplied Product</b>	Antibody pair set content: 1. Antibody pair for IP: rabbit polyclonal anti-MSLN (300 ul) 2. Antibody pair for WB: mouse purified polyclonal anti-MSLN (50 ug)
<b>Storage Instruction</b>	Store reagents of the antibody pair set at -20°C or lower. Please aliquot to avoid repeated freeze thaw cycle. Reagents should be returned to -20°C storage immediately after use.

## Applications

- Immunoprecipitation-Western Blot

[Protocol Download](#)

## Gene Info — MSLN

**Entrez GeneID** [10232](#)

**Gene Name** MSLN

**Gene Alias** CAK1, MPF, SMR

**Gene Description** mesothelin

**Omim ID** [601051](#)

**Gene Ontology** [Hyperlink](#)

**Gene Summary** An antibody that reacts with ovarian cancers and mesotheliomas was used to isolate a cell surface antigen named mesothelin. Although the function of mesothelin is unknown, it may play a role in cellular adhesion and is present on mesothelium, mesotheliomas, and ovarian cancers. This gene encodes a preproprotein that is cleaved into two products, megakaryocyte potentiating factor and mesothelin. Alternative splicing results in multiple transcript variants. [provided by RefSeq]

**Other Designations** megakaryocyte potentiating factor

## Disease

- [Adenocarcinoma](#)
- [Asbestosis](#)
- [Esophageal Neoplasms](#)
- [Mesothelioma](#)
- [Occupational Diseases](#)
- [Pleural Neoplasms](#)