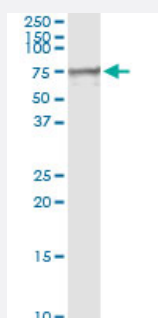


MSLN monoclonal antibody (M02), clone 1A10

Catalog # H00010232-M02

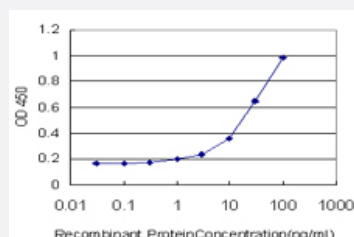
Size 100 ug

Applications



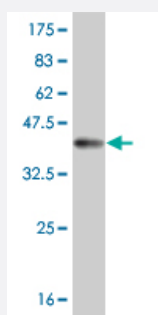
Immunoprecipitation

Immunoprecipitation of MSLN transfected lysate using anti-MSLN monoclonal antibody and Protein A Magnetic Bead, and immunoblotted with MSLN MaxPab rabbit polyclonal antibody.



Sandwich ELISA (Recombinant protein)

Detection limit for recombinant GST tagged MSLN is approximately 1ng/ml as a capture antibody.



Western Blot detection against Immunogen (36.74 KDa) .

Specification

Product Description

Mouse monoclonal antibody raised against a partial recombinant MSLN.

Immunogen	MSLN (NP_005814, 464 a.a. ~ 563 a.a) partial recombinant protein with GST tag. MW of the GST tag alone is 26 KDa.
Sequence	DLDTC DPRQLDVL YPKARLAFQNMNGSEYFVKIQSFLGGAPTE DLKALSQQNVSM DLATFMKLR TDAVLPLTVAEVQKLLGPHVEGLKAEERHRPV RDWI
Host	Mouse
Reactivity	Human
Interspecies Antigen Sequence	Mouse (58); Rat (57)
Isotype	IgG2b Kappa
Quality Control Testing	Antibody Reactive Against Recombinant Protein. Western Blot detection against Immunogen (36.74 KDa) .
Storage Buffer	In 1x PBS, pH 7.4
Storage Instruction	Store at -20°C or lower. Aliquot to avoid repeated freezing and thawing.

Applications

- Western Blot (Recombinant protein)

[Protocol Download](#)

- Immunoprecipitation

Immunoprecipitation of MSLN transfected lysate using anti-MSLN monoclonal antibody and Protein A Magnetic Bead, and immunoblotted with MSLN MaxPab rabbit polyclonal antibody.

[Protocol Download](#)

- Sandwich ELISA (Recombinant protein)

Detection limit for recombinant GST tagged MSLN is approximately 1ng/ml as a capture antibody.

[Protocol Download](#)

- ELISA

Gene Info — MSLN

Entrez GeneID

[10232](#)

GeneBank Accession#	NM_005823
Protein Accession#	NP_005814
Gene Name	MSLN
Gene Alias	CAK1, MPF, SMR
Gene Description	mesothelin
Omim ID	601051
Gene Ontology	Hyperlink
Gene Summary	An antibody that reacts with ovarian cancers and mesotheliomas was used to isolate a cell surface antigen named mesothelin. Although the function of mesothelin is unknown, it may play a role in cellular adhesion and is present on mesothelium, mesotheliomas, and ovarian cancers. This gene encodes a preproprotein that is cleaved into two products, megakaryocyte potentiating factor and mesothelin. Alternative splicing results in multiple transcript variants. [provided by RefSeq]
Other Designations	megakaryocyte potentiating factor

Disease

- [Adenocarcinoma](#)
- [Asbestosis](#)
- [Esophageal Neoplasms](#)
- [Mesothelioma](#)
- [Occupational Diseases](#)
- [Pleural Neoplasms](#)