

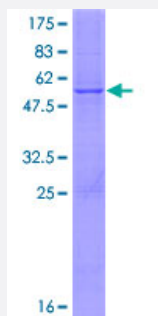
Full-Length

# COQ7 (Human) Recombinant Protein (P01)

Catalog # H00010229-P01

Size 25 ug, 10 ug

## Applications



## Specification

<b>Product Description</b>	Human COQ7 full-length ORF ( NP_057222.2, 1 a.a. - 217 a.a.) recombinant protein with GST-tag at N-terminal.
<b>Sequence</b>	MSCAGAAAAPRLWRLRPGARRSLSAYGRRTSVRFRSSGMTLDNISRAAVDRIIRVDHAGEYGANR YAGQMAVLGRTSVGPVIQKMWDQEKDHLKKFNELMVTFRVRPTVLMPLWNVLGFALGAGTALL GKEGAMACTVAVEESIAHHYNNQIRTLMEEDPEKYEELLQLIKKFRDEELEHHDIGLDHDAELAPA YAVLKSIIQAGCRVAILSERL
<b>Host</b>	Wheat Germ (in vitro)
<b>Theoretical MW (kDa)</b>	50.7
<b>Interspecies Antigen Sequence</b>	Mouse (85); Rat (83)
<b>Preparation Method</b>	<a href="#">in vitro wheat germ expression system</a>
<b>Purification</b>	Glutathione Sepharose 4 Fast Flow
<b>Quality Control Testing</b>	12.5% SDS-PAGE Stained with Coomassie Blue.
<b>Storage Buffer</b>	50 mM Tris-HCl, 10 mM reduced Glutathione, pH=8.0 in the elution buffer.
<b>Storage Instruction</b>	Store at -80°C. Aliquot to avoid repeated freezing and thawing.

**Note**

Best use within three months from the date of receipt of this protein.

## Applications

- Enzyme-linked Immunoabsorbent Assay
- Western Blot (Recombinant protein)
- Antibody Production
- Protein Array

## Gene Info — COQ7

**Entrez GeneID** [10229](#)**GeneBank Accession#** [NM\\_016138.3](#)**Protein Accession#** [NP\\_057222.2](#)**Gene Name** COQ7**Gene Alias** CAT5, CLK-1, CLK1**Gene Description** coenzyme Q7 homolog, ubiquinone (yeast)**Omim ID** [601683](#)**Gene Ontology** [Hyperlink](#)

**Gene Summary** The protein encoded by this gene is similar to a mitochondrial di-iron containing hydroxylase in *Saccharomyces cerevisiae* that is involved with ubiquinone biosynthesis. Mutations in the yeast gene lead to slower development and longer life span. Transcript variants have been described for this gene, but their full-length sequences have not been determined. [provided by RefSeq]

**Other Designations** COQ7 coenzyme Q, 7 homolog ubiquinone|COQ7 protein|placental protein KG-20|timing protein|ubiquinone biosynthesis protein

## Pathway

- [Metabolic pathways](#)

- [Ubiquinone and other terpenoid-quinone biosynthesis](#)