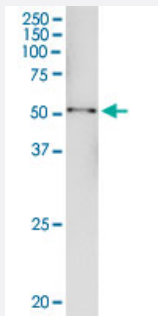


PLIN3 (Human) IP-WB Antibody Pair

Catalog # H00010226-PW1

Size 1 Set

Applications



Immunoprecipitation of PLIN3 transfected lysate using mouse monoclonal anti-PLIN3 and Protein A Magnetic Bead ([U0007](#)), and immunoblotted with mouse monoclonal anti-PLIN3.

Specification

Product Description	This IP-WB antibody pair set comes with one antibody for immunoprecipitation and another to detect the precipitated protein in western blot.
Reactivity	Human
Quality Control Testing	Immunoprecipitation-Western Blot (IP-WB) Immunoprecipitation of PLIN3 transfected lysate using mouse monoclonal anti-PLIN3 and Protein A Magnetic Bead (U0007), and immunoblotted with mouse monoclonal anti-PLIN3.
Supplied Product	Antibody pair set content: 1. Antibody pair for IP: mouse monoclonal anti-PLIN3 (300 ug) 2. Antibody pair for WB: mouse monoclonal anti-PLIN3 (50 ug)
Storage Instruction	Store reagents of the antibody pair set at -20°C or lower. Please aliquot to avoid repeated freeze thaw cycle. Reagents should be returned to -20°C storage immediately after use.

Applications

- Immunoprecipitation-Western Blot

[Protocol Download](#)

Gene Info — PLIN3

Entrez GeneID [10226](#)**Gene Name** PLIN3**Gene Alias** MGC11117, MGC2012, PP17, TIP47, M6PRBP1**Gene Description** mannose-6-phosphate receptor binding protein 1**Omim ID** [602702](#)**Gene Ontology** [Hyperlink](#)

Gene Summary Mannose 6-phosphate receptors (MPRs) deliver lysosomal hydrolase from the Golgi to endosome s and then return to the Golgi complex. The protein encoded by this gene interacts with the cytoplasmic domains of both cation-independent and cation-dependent MPRs, and is required for endosome-to-Golgi transport. This protein also binds directly to the GTPase RAB9 (RAB9A), a member of the RAS oncogene family. The interaction with RAB9 has been shown to increase the affinity of this protein for its cargo. Multiple transcript variants encoding different isoforms have been found for this gene

Other Designations MPR-BINDING PROTEIN, 47-KD|MPR-binding protein 47 kDa|cargo selection protein (mannose 6 phosphate receptor binding protein)|cargo selection protein TIP47|mannose 6 phosphate receptor binding protein 1|placental protein 17|tail-interacting protein, 47 kD