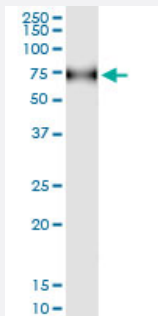


# CD96 (Human) IP-WB Antibody Pair

Catalog # H00010225-PW1

Size 1 Set

## Applications



Immunoprecipitation of CD96 transfected lysate using rabbit polyclonal anti-CD96 and Protein A Magnetic Bead ([U0007](#)), and immunoblotted with mouse polyclonal anti-CD96.

## Specification

<b>Product Description</b>	This IP-WB antibody pair set comes with one antibody for immunoprecipitation and another to detect the precipitated protein in western blot.
<b>Reactivity</b>	Human
<b>Interspecies Antigen Sequence</b>	Mouse (60); Rat (58)
<b>Quality Control Testing</b>	Immunoprecipitation-Western Blot (IP-WB) Immunoprecipitation of CD96 transfected lysate using rabbit polyclonal anti-CD96 and Protein A Magnetic Bead ( <a href="#">U0007</a> ), and immunoblotted with mouse polyclonal anti-CD96.
<b>Supplied Product</b>	Antibody pair set content: 1. Antibody pair for IP: rabbit polyclonal anti-CD96 (300 ul) 2. Antibody pair for WB: mouse polyclonal anti-CD96 (50 ul)
<b>Storage Instruction</b>	Store reagents of the antibody pair set at -20°C or lower. Please aliquot to avoid repeated freeze thaw cycle. Reagents should be returned to -20°C storage immediately after use.

## Applications

- Immunoprecipitation-Western Blot

[Protocol Download](#)

## Gene Info — CD96

**Entrez GeneID** [10225](#)

**Gene Name** CD96

**Gene Alias** DKFZp667E2122, MGC22596, TACTILE

**Gene Description** CD96 molecule

**Omim ID** [211750](#) [605039](#) [606037](#)

**Gene Ontology** [Hyperlink](#)

**Gene Summary** The protein encoded by this gene belongs to the immunoglobulin superfamily. It is a type I membrane protein. The protein may play a role in the adhesive interactions of activated T and NK cells during the late phase of the immune response. It may also function in antigen presentation. Alternative splicing occurs at this locus and two transcript variants encoding distinct isoforms have been identified. [provided by RefSeq]

**Other Designations** CD96 antigen|T cell activation, increased late expression|T-cell surface protein tactile

## Disease

- [Abnormalities](#)
- [Craniofacial Abnormalities](#)
- [Syndrome](#)
- [Translocation](#)