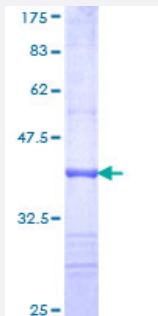


# GDF11 (Human) Recombinant Protein (Q01)

Catalog # H00010220-Q01

Size 25 ug, 10 ug

## Applications



## Specification

<b>Product Description</b>	Human GDF11 partial ORF ( NP_005802, 310 a.a. - 407 a.a.) recombinant protein with GST-tag at N-terminal.
<b>Sequence</b>	ESRCCRYPLTVDFEAFGWDWIAPKRYKANYCSGQCEYMFMMQKYPHTHLVQQANPRGSAGPCC TPTKMSPINMLYFNDKQQIYGKIPGMVVDRGCS
<b>Host</b>	Wheat Germ (in vitro)
<b>Theoretical MW (kDa)</b>	36.52
<b>Interspecies Antigen Sequence</b>	Mouse (100); Rat (100)
<b>Preparation Method</b>	<a href="#">in vitro wheat germ expression system</a>
<b>Purification</b>	Glutathione Sepharose 4 Fast Flow
<b>Quality Control Testing</b>	12.5% SDS-PAGE Stained with Coomassie Blue.
<b>Storage Buffer</b>	50 mM Tris-HCl, 10 mM reduced Glutathione, pH=8.0 in the elution buffer.
<b>Storage Instruction</b>	Store at -80°C. Aliquot to avoid repeated freezing and thawing.
<b>Note</b>	Best use within three months from the date of receipt of this protein.

## Applications

- Enzyme-linked Immunoabsorbent Assay
- Western Blot (Recombinant protein)
- Antibody Production
- Protein Array

## Gene Info — GDF11

Entrez GeneID [10220](#)

GeneBank Accession# [NM\\_005811](#)

Protein Accession# [NP\\_005802](#)

Gene Name GDF11

Gene Alias BMP-11, BMP11

Gene Description growth differentiation factor 11

Omim ID [603936](#)

Gene Ontology [Hyperlink](#)

**Gene Summary** The protein encoded by this gene is a member of the bone morphogenetic protein (BMP) family and the TGF-beta superfamily. This group of proteins is characterized by a polybasic proteolytic processing site which is cleaved to produce a mature protein containing seven conserved cysteine residues. The members of this family are regulators of cell growth and differentiation in both embryonic and adult tissues. Studies in mice and Xenopus suggest that this protein is involved in mesodermal formation and neurogenesis during embryonic development. [provided by RefSeq]

**Other Designations** bone morphogenetic protein 11

## Disease

- [Genetic Predisposition to Disease](#)
- [Obesity](#)
- [Ovarian Failure](#)

- [Polycystic Ovary Syndrome](#)
- [Puberty](#)
- [Thrombophilia](#)
- [Tobacco Use Disorder](#)