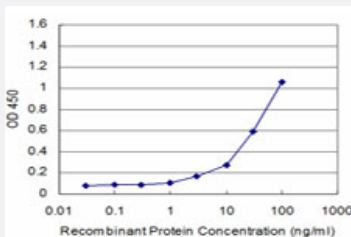


GDF11 monoclonal antibody (M09), clone 1E11

Catalog # H00010220-M09

Size 100 ug

Applications



Sandwich ELISA (Recombinant protein)

Detection limit for recombinant GST tagged GDF11 is approximately 1ng/ml as a capture antibody.

Specification

Product Description	Mouse monoclonal antibody raised against a partial recombinant GDF11.
Immunogen	GDF11 (NP_005802, 310 a.a. ~ 407 a.a) partial recombinant protein with GST tag. MW of the GST tag alone is 26 KDa.
Sequence	ESRCCRYPLTVDFEAFGWDWIAPKRYKANYCSGQCEYMFMMQKYPHTHLVQQANPRGSAGPCC TPTKMSPINMLYFNDKQQIYGKIPGMVVDRCGCS
Host	Mouse
Reactivity	Human
Interspecies Antigen Sequence	Mouse (100); Rat (100)
Isotype	IgG2a Kappa
Quality Control Testing	Antibody Reactive Against Recombinant Protein.
Storage Buffer	In 1x PBS, pH 7.4
Storage Instruction	Store at -20°C or lower. Aliquot to avoid repeated freezing and thawing.

Applications

- Sandwich ELISA (Recombinant protein)

Detection limit for recombinant GST tagged GDF11 is approximately 1ng/ml as a capture antibody.

[Protocol Download](#)

- ELISA

Gene Info — GDF11

Entrez GeneID	10220
---------------	-----------------------

GeneBank Accession#	NM_005811
---------------------	---------------------------

Protein Accession#	NP_005802
--------------------	---------------------------

Gene Name	GDF11
-----------	-------

Gene Alias	BMP-11, BMP11
------------	---------------

Gene Description	growth differentiation factor 11
------------------	----------------------------------

Omim ID	603936
---------	------------------------

Gene Ontology	Hyperlink
---------------	---------------------------

Gene Summary	The protein encoded by this gene is a member of the bone morphogenetic protein (BMP) family and the TGF-beta superfamily. This group of proteins is characterized by a polybasic proteolytic processing site which is cleaved to produce a mature protein containing seven conserved cysteine residues. The members of this family are regulators of cell growth and differentiation in both embryonic and adult tissues. Studies in mice and Xenopus suggest that this protein is involved in mesodermal formation and neurogenesis during embryonic development. [provided by RefSeq]
--------------	---

Other Designations	bone morphogenetic protein 11
--------------------	-------------------------------

Disease

- [Genetic Predisposition to Disease](#)
- [Obesity](#)
- [Ovarian Failure](#)

- [Polycystic Ovary Syndrome](#)
- [Puberty](#)
- [Thrombophilia](#)
- [Tobacco Use Disorder](#)