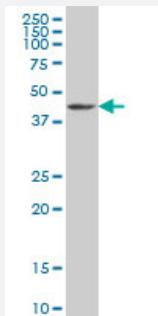


GDF11 monoclonal antibody (M03), clone 1E6

Catalog # H00010220-M03

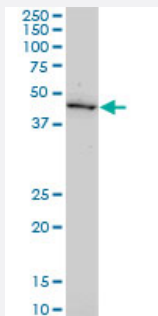
Size 100 ug

Applications



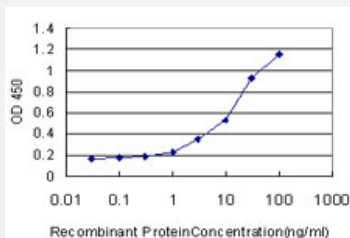
Western Blot (Cell lysate)

GDF11 monoclonal antibody (M03), clone 1E6 Western Blot analysis of GDF11 expression in K-562 (Cat # L009V1).



Western Blot (Cell lysate)

GDF11 monoclonal antibody (M03), clone 1E6. Western Blot analysis of GDF11 expression in Jurkat (Cat # L017V1).



Sandwich ELISA (Recombinant protein)

Detection limit for recombinant GST tagged GDF11 is approximately 0.3ng/ml as a capture antibody.

Specification

Product Description

Mouse monoclonal antibody raised against a partial recombinant GDF11.

Immunogen	GDF11 (NP_005802, 310 a.a. ~ 407 a.a) partial recombinant protein with GST tag. MW of the GST tag alone is 26 KDa.
Sequence	ESRCCRYPLTVDFEAFGWDWIAPKRYKANYCSGQCEYMFMMQKYPHTHLVQQANPRGSAGPCC TPTKMSPINMLYFNDKQQIYGKIPGMVVDRCGCS
Host	Mouse
Reactivity	Human
Interspecies Antigen Sequence	Mouse (100); Rat (100)
Isotype	IgG2a Kappa
Quality Control Testing	Antibody Reactive Against Recombinant Protein.
Storage Buffer	In 1x PBS, pH 7.4
Storage Instruction	Store at -20°C or lower. Aliquot to avoid repeated freezing and thawing.

Applications

- Western Blot (Cell lysate)

GDF11 monoclonal antibody (M03), clone 1E6 Western Blot analysis of GDF11 expression in K-562 (Cat # L009V1).

[Protocol Download](#)

- Western Blot (Cell lysate)

GDF11 monoclonal antibody (M03), clone 1E6. Western Blot analysis of GDF11 expression in Jurkat (Cat # L017V1).

[Protocol Download](#)

- Sandwich ELISA (Recombinant protein)

Detection limit for recombinant GST tagged GDF11 is approximately 0.3ng/ml as a capture antibody.

[Protocol Download](#)

- ELISA

Gene Info — GDF11

Entrez GeneID [10220](#)

GeneBank Accession#	NM_005811
Protein Accession#	NP_005802
Gene Name	GDF11
Gene Alias	BMP-11, BMP11
Gene Description	growth differentiation factor 11
Omim ID	603936
Gene Ontology	Hyperlink
Gene Summary	<p>The protein encoded by this gene is a member of the bone morphogenetic protein (BMP) family and the TGF-beta superfamily. This group of proteins is characterized by a polybasic proteolytic processing site which is cleaved to produce a mature protein containing seven conserved cysteine residues. The members of this family are regulators of cell growth and differentiation in both embryonic and adult tissues. Studies in mice and Xenopus suggest that this protein is involved in mesodermal formation and neurogenesis during embryonic development. [provided by RefSeq]</p>
Other Designations	bone morphogenetic protein 11

Disease

- [Genetic Predisposition to Disease](#)
- [Obesity](#)
- [Ovarian Failure](#)
- [Polycystic Ovary Syndrome](#)
- [Puberty](#)
- [Thrombophilia](#)
- [Tobacco Use Disorder](#)