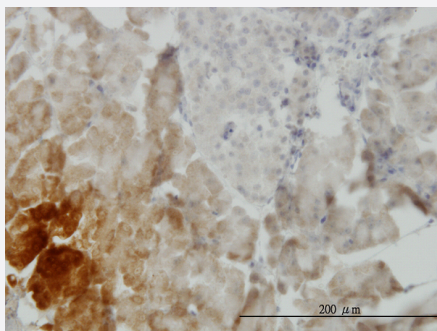


GDF11 monoclonal antibody (M01), clone 3G6

Catalog # H00010220-M01

Size 100 ug

Applications



Immunohistochemistry (Formalin/PFA-fixed paraffin-embedded sections)

Immunoperoxidase of monoclonal antibody to GDF11 on formalin-fixed paraffin-embedded human pancreas. [antibody concentration 3 ug/ml]

Specification

Product Description	Mouse monoclonal antibody raised against a partial recombinant GDF11.
Immunogen	GDF11 (NP_005802, 310 a.a. ~ 407 a.a) partial recombinant protein with GST tag. MW of the GST tag alone is 26 KDa.
Sequence	ESRCCRYPLTVDFEAFGWDWIAPKRYKANYCSGQCEYMFMMQKYPHTHLVQQANPRGSAGPCC TPTKMSPINMLYFNDKQQIYGKIPGMVVDRCGCS
Host	Mouse
Reactivity	Human
Interspecies Antigen Sequence	Mouse (100); Rat (100)
Isotype	IgG2b Kappa
Quality Control Testing	Antibody Reactive Against Recombinant Protein.
Storage Buffer	In 1x PBS, pH 7.4
Storage Instruction	Store at -20°C or lower. Aliquot to avoid repeated freezing and thawing.

Applications

- Immunohistochemistry (Formalin/PFA-fixed paraffin-embedded sections)

Immunoperoxidase of monoclonal antibody to GDF11 on formalin-fixed paraffin-embedded human pancreas. [antibody concentration 3 ug/ml]

[Protocol Download](#)

- ELISA

Gene Info — GDF11

Entrez GeneID [10220](#)

GeneBank Accession# [NM_005811](#)

Protein Accession# [NP_005802](#)

Gene Name GDF11

Gene Alias BMP-11, BMP11

Gene Description growth differentiation factor 11

Omim ID [603936](#)

Gene Ontology [Hyperlink](#)

Gene Summary The protein encoded by this gene is a member of the bone morphogenetic protein (BMP) family and the TGF-beta superfamily. This group of proteins is characterized by a polybasic proteolytic processing site which is cleaved to produce a mature protein containing seven conserved cysteine residues. The members of this family are regulators of cell growth and differentiation in both embryonic and adult tissues. Studies in mice and Xenopus suggest that this protein is involved in mesodermal formation and neurogenesis during embryonic development. [provided by RefSeq]

Other Designations bone morphogenetic protein 11

Disease

- [Genetic Predisposition to Disease](#)
- [Obesity](#)
- [Ovarian Failure](#)

- [Polycystic Ovary Syndrome](#)
- [Puberty](#)
- [Thrombophilia](#)
- [Tobacco Use Disorder](#)