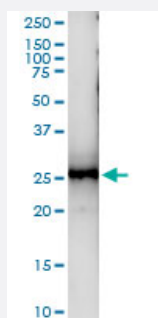


KLRG1 (Human) IP-WB Antibody Pair

Catalog # H00010219-PW1

Size 1 Set

Applications



Immunoprecipitation of KLRG1 transfected lysate using rabbit polyclonal anti-KLRG1 and Protein A Magnetic Bead ([U0007](#)), and immunoblotted with mouse purified polyclonal anti-KLRG1.

Specification

Product Description	This IP-WB antibody pair set comes with one antibody for immunoprecipitation and another to detect the precipitated protein in western blot.
Reactivity	Human
Interspecies Antigen Sequence	Mouse (56); Rat (54)
Quality Control Testing	Immunoprecipitation-Western Blot (IP-WB) Immunoprecipitation of KLRG1 transfected lysate using rabbit polyclonal anti-KLRG1 and Protein A Magnetic Bead (U0007), and immunoblotted with mouse purified polyclonal anti-KLRG1.
Supplied Product	Antibody pair set content: 1. Antibody pair for IP: rabbit polyclonal anti-KLRG1 (300 ul) 2. Antibody pair for WB: mouse purified polyclonal anti-KLRG1 (50 ug)
Storage Instruction	Store reagents of the antibody pair set at -20°C or lower. Please aliquot to avoid repeated freeze thaw cycle. Reagents should be returned to -20°C storage immediately after use.

Applications

- Immunoprecipitation-Western Blot

[Protocol Download](#)

Gene Info — KLRG1

Entrez GeneID [10219](#)

Gene Name KLRG1

Gene Alias 2F1, CLEC15A, MAFA, MAFA-2F1, MAFA-L, MAFA-LIKE, MGC13600

Gene Description killer cell lectin-like receptor subfamily G, member 1

Omim ID [604874](#)

Gene Ontology [Hyperlink](#)

Gene Summary Natural killer (NK) cells are lymphocytes that can mediate lysis of certain tumor cells and virus-infected cells without previous activation. They can also regulate specific humoral and cell-mediated immunity. The protein encoded by this gene belongs to the killer cell lectin-like receptor (KLR) family, which is a group of transmembrane proteins preferentially expressed in NK cells. Studies in mice suggested that the expression of this gene may be regulated by MHC class I molecules. Alternatively spliced transcript variants have been reported, but their full-length natures have not yet been determined. [provided by RefSeq]

Other Designations C-type lectin domain family 15, member A|mast cell function-associated antigen (ITIM-containing)

Disease

- [Tobacco Use Disorder](#)