

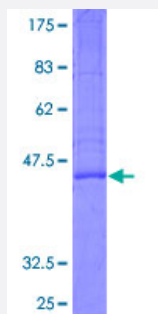
Full-Length

KLRG1 (Human) Recombinant Protein (P01)

Catalog # H00010219-P01

Size 25 ug, 10 ug

Applications



Specification

Product Description	Human KLRG1 full-length ORF (NP_005801.3, 1 a.a. - 189 a.a.) recombinant protein with GST-tag at N-terminal.
Sequence	MTDSVIYSMLELPTATQAQNDYGPQQKSSSSRPSCSCLVAIALGLLTAVLLSVLLYQWILCQGSNY STCASCPCPDRWMKYGNHCYFVSVEEKDWNSSLEFCLARDSHLLVITDNQEMSLQVFLSEAF CWIGLRNNSGWRWEDGSPLNFSRISNSFVQTCGAINKNGLQASSCEVPLHWVCKKVRL
Host	Wheat Germ (in vitro)
Theoretical MW (kDa)	47.6
Interspecies Antigen Sequence	Mouse (56); Rat (54)
Preparation Method	in vitro wheat germ expression system
Purification	Glutathione Sepharose 4 Fast Flow
Quality Control Testing	12.5% SDS-PAGE Stained with Coomassie Blue.
Storage Buffer	50 mM Tris-HCl, 10 mM reduced Glutathione, pH=8.0 in the elution buffer.
Storage Instruction	Store at -80°C. Aliquot to avoid repeated freezing and thawing.

Note

Best use within three months from the date of receipt of this protein.

Applications

- Enzyme-linked Immunoabsorbent Assay
- Western Blot (Recombinant protein)
- Antibody Production
- Protein Array

Gene Info — KLRG1

Entrez GeneID [10219](#)

GeneBank Accession# [NM_005810.3](#)

Protein Accession# [NP_005801.3](#)

Gene Name KLRG1

Gene Alias 2F1, CLEC15A, MAFA, MAFA-2F1, MAFA-L, MAFA-LIKE, MGC13600

Gene Description killer cell lectin-like receptor subfamily G, member 1

Omim ID [604874](#)

Gene Ontology [Hyperlink](#)

Gene Summary Natural killer (NK) cells are lymphocytes that can mediate lysis of certain tumor cells and virus-infected cells without previous activation. They can also regulate specific humoral and cell-mediated immunity. The protein encoded by this gene belongs to the killer cell lectin-like receptor (KLR) family, which is a group of transmembrane proteins preferentially expressed in NK cells. Studies in mice suggested that the expression of this gene may be regulated by MHC class I molecules. Alternatively spliced transcript variants have been reported, but their full-length natures have not yet been determined. [provided by RefSeq]

Other Designations C-type lectin domain family 15, member A|mast cell function-associated antigen (ITIM-containing)

Disease

- [Tobacco Use Disorder](#)