

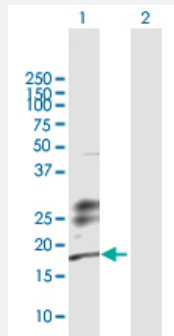
MaxPab®

KLRG1 MaxPab rabbit polyclonal antibody (D01)

Catalog # H00010219-D01

Size 100 uL

Applications

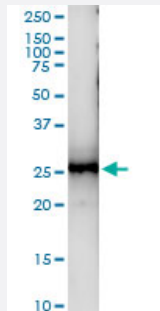


Western Blot (Transfected lysate)

Western Blot analysis of KLRG1 expression in transfected 293T cell line ([H00010219-T02](#)) by KLRG1 MaxPab polyclonal antibody.

Lane 1: KLRG1 transfected lysate(21.2 KDa).

Lane 2: Non-transfected lysate.



Immunoprecipitation

Immunoprecipitation of KLRG1 transfected lysate using anti-KLRG1 MaxPab rabbit polyclonal antibody and Protein A Magnetic Bead, and immunoblotted with KLRG1 purified MaxPab mouse polyclonal antibody (B01P) ([H00010219-B01P](#)).

Specification

Product Description	Rabbit polyclonal antibody raised against a full-length human KLRG1 protein.
Immunogen	KLRG1 (NP_005801.3, 1 a.a. ~ 189 a.a) full-length human protein.
Sequence	MTDSVIYSMLELPTATQAQNDYGPQQKSSSSSRPSCSCLVAIALGLLTAVLLSVLLYQWILCQGSNY STCASCPCPDRWMKYGNHCYYFSVEEKDWNSSLEFCLARDSHLLVITDNQEMSLQVFLSEAF CWIGLRNNSGWRWEDGSPLNFSRISNSFVQTCGAINKNGLQASSCEVPLHWVCKKVRL
Host	Rabbit
Reactivity	Human

Interspecies Antigen Sequence	Mouse (56); Rat (54)
Quality Control Testing	Antibody reactive against mammalian transfected lysate.
Storage Buffer	No additive
Storage Instruction	Store at -20°C or lower. Aliquot to avoid repeated freezing and thawing.

Applications

- Western Blot (Transfected lysate)

Western Blot analysis of KLRG1 expression in transfected 293T cell line ([H00010219-T02](#)) by KLRG1 MaxPab polyclonal antibody.

Lane 1: KLRG1 transfected lysate(21.2 KDa).

Lane 2: Non-transfected lysate.

[Protocol Download](#)

- Immunoprecipitation

Immunoprecipitation of KLRG1 transfected lysate using anti-KLRG1 MaxPab rabbit polyclonal antibody and Protein A Magnetic Bead, and immunoblotted with KLRG1 purified MaxPab mouse polyclonal antibody (B01P) ([H00010219-B01P](#)).

[Protocol Download](#)

Gene Info — KLRG1

Entrez GeneID	10219
GeneBank Accession#	NM_005810
Protein Accession#	NP_005801.3
Gene Name	KLRG1
Gene Alias	2F1, CLEC15A, MAFA, MAFA-2F1, MAFA-L, MAFA-LIKE, MGC13600
Gene Description	killer cell lectin-like receptor subfamily G, member 1
Omim ID	604874
Gene Ontology	Hyperlink

Gene Summary

Natural killer (NK) cells are lymphocytes that can mediate lysis of certain tumor cells and virus-infected cells without previous activation. They can also regulate specific humoral and cell-mediated immunity. The protein encoded by this gene belongs to the killer cell lectin-like receptor (KLR) family, which is a group of transmembrane proteins preferentially expressed in NK cells. Studies in mice suggested that the expression of this gene may be regulated by MHC class I molecules. Alternatively spliced transcript variants have been reported, but their full-length natures have not yet been determined. [provided by RefSeq]

Other Designations

C-type lectin domain family 15, member A|mast cell function-associated antigen (ITIM-containing)

Disease

- [Tobacco Use Disorder](#)