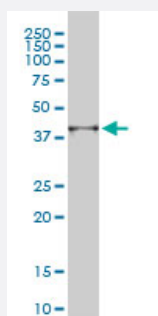


# PSMD14 monoclonal antibody (M01), clone 4A10-E8

Catalog # H00010213-M01

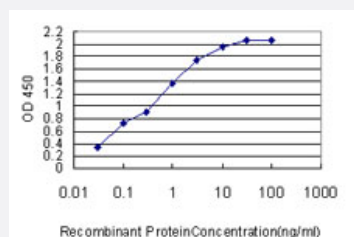
Size 100 ug

## Applications



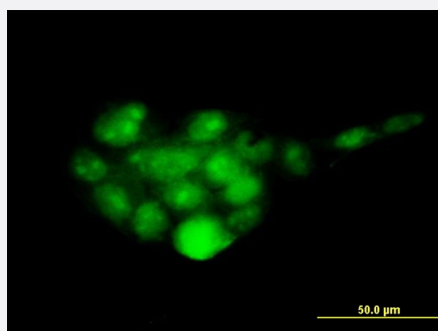
### Western Blot (Cell lysate)

PSMD14 monoclonal antibody (M01), clone 4A10-E8 Western Blot analysis of PSMD14 expression in A-431 ( Cat # L015V1 ).



### Sandwich ELISA (Recombinant protein)

Detection limit for recombinant GST tagged PSMD14 is approximately 0.03ng/ml as a capture antibody.



### Immunofluorescence

Immunofluorescence of monoclonal antibody to PSMD14 on A-431 cell. [antibody concentration 25 ug/ml]

## Specification

### Product Description

Mouse monoclonal antibody raised against a full length recombinant PSMD14.

Immunogen	PSMD14 (AAH09524.1, 1 a.a. ~ 95 a.a) full-length recombinant protein with GST tag. MW of the GST tag alone is 26 KDa.
Sequence	MLLN LHKKSWMEGLTLQDYSEHCKHNESVVKEMLELAKNYNKAVEEEDKMTPEQLAIKNVGKQDPKRHLEEHVDVLM TSNIVQCLAAMLDTVVFK
Host	Mouse
Reactivity	Human
Isotype	IgG1 Kappa
Quality Control Testing	Antibody Reactive Against Recombinant Protein.
Storage Buffer	In 1x PBS, pH 7.4
Storage Instruction	Store at -20°C or lower. Aliquot to avoid repeated freezing and thawing.

## Applications

- Western Blot (Cell lysate)

PSMD14 monoclonal antibody (M01), clone 4A10-E8 Western Blot analysis of PSMD14 expression in A-431 ( Cat # L015V1 ).

[Protocol Download](#)

- Sandwich ELISA (Recombinant protein)

Detection limit for recombinant GST tagged PSMD14 is approximately 0.03ng/ml as a capture antibody.

[Protocol Download](#)

- ELISA

- Immunofluorescence

Immunofluorescence of monoclonal antibody to PSMD14 on A-431 cell. [antibody concentration 25 ug/ml]

## Gene Info — PSMD14

Entrez GeneID	<a href="#">10213</a>
GeneBank Accession#	<a href="#">BC009524</a>
Protein Accession#	<a href="#">AAH09524.1</a>
Gene Name	PSMD14

Gene Alias	PAD1, POH1, rpn11
Gene Description	proteasome (prosome, macropain) 26S subunit, non-ATPase, 14
Omim ID	<a href="#">607173</a>
Gene Ontology	<a href="#">Hyperlink</a>
Gene Summary	PSMD14 is a component of the 26S proteasome, a multiprotein complex that degrades proteins targeted for destruction by the ubiquitin pathway (Spataro et al., 1997 [PubMed 9374539]).[supplied by OMIM]
Other Designations	26S proteasome-associated pad1 homolog

## Pathway

- [Proteasome](#)