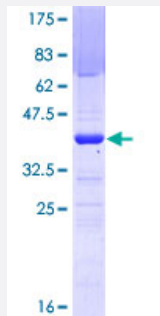


# RFP2 (Human) Recombinant Protein (Q01)

Catalog # H00010206-Q01

Size 25 ug, 10 ug

## Applications



## Specification

<b>Product Description</b>	Human RFP2 partial ORF ( NP_005789, 1 a.a. - 100 a.a.) recombinant protein with GST-tag at N-terminal.
<b>Sequence</b>	MELLEEDLTCPICCSLFDDPRVLPCSHNFCKKCLEGILEGSVRNSLWRPAPFKCPTCRKETSATG INSLQVNYSLKGIVEKYNKIKISPKMPVCKGHLGQ
<b>Host</b>	Wheat Germ (in vitro)
<b>Theoretical MW (kDa)</b>	36.74
<b>Preparation Method</b>	<a href="#">in vitro wheat germ expression system</a>
<b>Purification</b>	Glutathione Sepharose 4 Fast Flow
<b>Quality Control Testing</b>	12.5% SDS-PAGE Stained with Coomassie Blue.
<b>Storage Buffer</b>	50 mM Tris-HCl, 10 mM reduced Glutathione, pH=8.0 in the elution buffer.
<b>Storage Instruction</b>	Store at -80°C. Aliquot to avoid repeated freezing and thawing.
<b>Note</b>	Best use within three months from the date of receipt of this protein.

## Applications

- Enzyme-linked Immunoabsorbent Assay
- Western Blot (Recombinant protein)
- Antibody Production
- Protein Array

## Gene Info — TRIM13

**Entrez GeneID** [10206](#)

**GeneBank Accession#** [NM\\_005798](#)

**Protein Accession#** [NP\\_005789](#)

**Gene Name** TRIM13

**Gene Alias** CAR, DLEU5, LEU5, RFP2, RNF77

**Gene Description** tripartite motif-containing 13

**Omim ID** [605661](#)

**Gene Ontology** [Hyperlink](#)

**Gene Summary** This gene encodes a member of the tripartite motif (TRIM) family. The TRIM motif includes three zinc-binding domains, a RING, a B-box type 1 and a B-box type 2, and a coiled-coil region. This gene is located on chromosome 13 within the minimal deletion region for B-cell chronic lymphocytic leukemia. Multiple alternatively spliced transcript variants have been found for this gene. [provided by RefSeq]

**Other Designations** CLL-associated RING finger|OTTHUMP00000018431|ret finger protein 2|tripartite motif protein 13