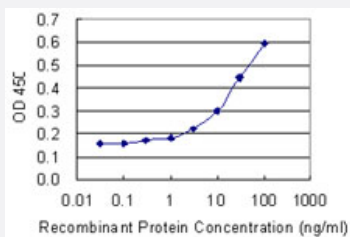


TRIM13 monoclonal antibody (M02), clone 1E5

Catalog # H00010206-M02

Size 100 ug

Applications



Sandwich ELISA (Recombinant protein)

Detection limit for recombinant GST tagged TRIM13 is 1 ng/ml as a capture antibody.

Specification

Product Description	Mouse monoclonal antibody raised against a partial recombinant TRIM13.
Immunogen	TRIM13 (NP_005789, 1 a.a. ~ 100 a.a) partial recombinant protein with GST tag. MW of the GST tag alone is 26 KDa.
Sequence	MELLEEDLTCPICCSLFDDPRVLPCSHNFCKKCLEGILEGSRNSLWRPAPFKCPTCRKETSATG INSLQVNYSLKGMEKYNIKISPMPVCKGHLGQ
Host	Mouse
Reactivity	Human
Isotype	IgG1 Kappa
Quality Control Testing	Antibody Reactive Against Recombinant Protein.
Storage Buffer	In 1x PBS, pH 7.4
Storage Instruction	Store at -20°C or lower. Aliquot to avoid repeated freezing and thawing.

Applications

- Sandwich ELISA (Recombinant protein)

Detection limit for recombinant GST tagged TRIM13 is 1 ng/ml as a capture antibody.

[Protocol Download](#)

- ELISA

Gene Info — TRIM13

Entrez GeneID	10206
---------------	-----------------------

GeneBank Accession#	NM_005798
---------------------	---------------------------

Protein Accession#	NP_005789
--------------------	---------------------------

Gene Name	TRIM13
-----------	--------

Gene Alias	CAR, DLEU5, LEU5, RFP2, RNF77
------------	-------------------------------

Gene Description	tripartite motif-containing 13
------------------	--------------------------------

Omim ID	605661
---------	------------------------

Gene Ontology	Hyperlink
---------------	---------------------------

Gene Summary	This gene encodes a member of the tripartite motif (TRIM) family. The TRIM motif includes three zinc-binding domains, a RING, a B-box type 1 and a B-box type 2, and a coiled-coil region. This gene is located on chromosome 13 within the minimal deletion region for B-cell chronic lymphocytic leukemia. Multiple alternatively spliced transcript variants have been found for this gene. [provided by RefSeq]
--------------	---

Other Designations	CLL-associated RING finger OTTHUMP00000018431 ret finger protein 2 tripartite motif protein 13
--------------------	--