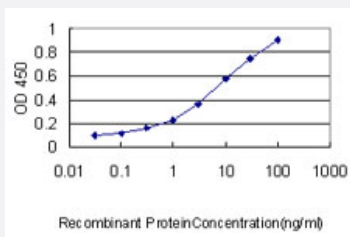


# TRIM13 monoclonal antibody (M01), clone 2A11

Catalog # H00010206-M01

Size 100 ug

## Applications



### Sandwich ELISA (Recombinant protein)

Detection limit for recombinant GST tagged RFP2 is approximately 0.1ng/ml as a capture antibody.

## Specification

<b>Product Description</b>	Mouse monoclonal antibody raised against a partial recombinant TRIM13.
<b>Immunogen</b>	TRIM13 (NP_005789, 1 a.a. ~ 100 a.a) partial recombinant protein with GST tag. MW of the GST tag alone is 26 KDa.
<b>Sequence</b>	MELLEEDLTCPICCSLFDDPRVLPCSHNFCKKCLEGILEGSRNSLWRPAPFKCPTCRKETSATG INSLQVNYSLKGMEKYNKIKISPKMPVCKGHLGQ
<b>Host</b>	Mouse
<b>Reactivity</b>	Human
<b>Isotype</b>	IgG2a lambda
<b>Quality Control Testing</b>	Antibody Reactive Against Recombinant Protein.
<b>Storage Buffer</b>	In 1x PBS, pH 7.4
<b>Storage Instruction</b>	Store at -20°C or lower. Aliquot to avoid repeated freezing and thawing.

## Applications

- Sandwich ELISA (Recombinant protein)

Detection limit for recombinant GST tagged RFP2 is approximately 0.1ng/ml as a capture antibody.

[Protocol Download](#)

- ELISA

## Gene Info — TRIM13

Entrez GeneID [10206](#)

GeneBank Accession# [NM\\_005798](#)

Protein Accession# [NP\\_005789](#)

Gene Name TRIM13

Gene Alias CAR, DLEU5, LEU5, RFP2, RNF77

Gene Description tripartite motif-containing 13

Omim ID [605661](#)

Gene Ontology [Hyperlink](#)

**Gene Summary** This gene encodes a member of the tripartite motif (TRIM) family. The TRIM motif includes three zinc-binding domains, a RING, a B-box type 1 and a B-box type 2, and a coiled-coil region. This gene is located on chromosome 13 within the minimal deletion region for B-cell chronic lymphocytic leukemia. Multiple alternatively spliced transcript variants have been found for this gene. [provided by RefSeq]

**Other Designations** CLL-associated RING finger|OTTHUMP00000018431|ret finger protein 2|tripartite motif protein 13