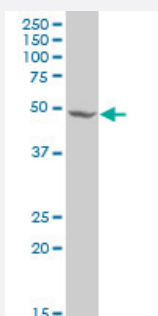


RFP2 polyclonal antibody (A01)

Catalog # H00010206-A01

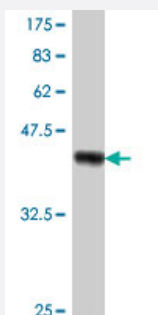
Size 50 uL

Applications



Western Blot (Cell lysate)

RFP2 polyclonal antibody (A01), Lot # UYL6060127QCS1 Western Blot analysis of RFP2 expression in HeLa (Cat # L013V1).



Western Blot detection against Immunogen (37.11 KDa) .

Specification

Product Description

Mouse polyclonal antibody raised against a partial recombinant RFP2.

Immunogen

RFP2 (NP_005789, 1 a.a. ~ 100 a.a) partial recombinant protein with GST tag.

Sequence

MELLEEDLTCPICCSLFDDPRVLPCSHNFCKKCLEGILEGSVRNSLWRPAPFKCPTCRKETSATG
INSLQVNYSLKGVEKYNKIKISPKMPVCKGHLGQ

Host

Mouse

Reactivity

Human

Quality Control Testing

Antibody Reactive Against Recombinant Protein.
Western Blot detection against Immunogen (37.11 KDa) .

Storage Buffer	50 % glycerol
----------------	---------------

Storage Instruction	Store at -20°C or lower. Aliquot to avoid repeated freezing and thawing.
---------------------	--

Applications

- Western Blot (Cell lysate)

RFP2 polyclonal antibody (A01), Lot # UYL6060127QCS1 Western Blot analysis of RFP2 expression in HeLa (Cat # L013V1).

[Protocol Download](#)

- Western Blot (Recombinant protein)

[Protocol Download](#)

- ELISA

Gene Info — TRIM13

Entrez GeneID	10206
---------------	-----------------------

GeneBank Accession#	NM_005798
---------------------	---------------------------

Protein Accession#	NP_005789
--------------------	---------------------------

Gene Name	TRIM13
-----------	--------

Gene Alias	CAR, DLEU5, LEU5, RFP2, RNF77
------------	-------------------------------

Gene Description	tripartite motif-containing 13
------------------	--------------------------------

Omim ID	605661
---------	------------------------

Gene Ontology	Hyperlink
---------------	---------------------------

Gene Summary	This gene encodes a member of the tripartite motif (TRIM) family. The TRIM motif includes three zinc-binding domains, a RING, a B-box type 1 and a B-box type 2, and a coiled-coil region. This gene is located on chromosome 13 within the minimal deletion region for B-cell chronic lymphocytic leukemia. Multiple alternatively spliced transcript variants have been found for this gene. [provided by RefSeq]
--------------	---

Other Designations	CLL-associated RING finger OTTHUMP00000018431 ret finger protein 2 tripartite motif protein 13
--------------------	--