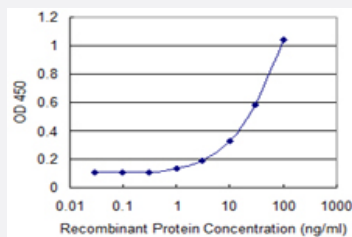


MPZL2 monoclonal antibody (M06), clone 2E10

Catalog # H00010205-M06

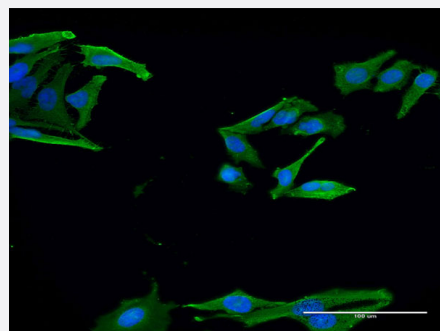
Size 100 ug

Applications



Sandwich ELISA (Recombinant protein)

Detection limit for recombinant GST tagged MPZL2 is 1 ng/ml as a capture antibody.



Immunofluorescence

Immunofluorescence of monoclonal antibody to MPZL2 on HeLa cell . [antibody concentration 40 ug/ml]

Specification

Product Description

Mouse monoclonal antibody raised against a partial recombinant MPZL2.

Immunogen

MPZL2 (NP_005788.1, 27 a.a. ~ 136 a.a) partial recombinant protein with GST tag. MW of the GST tag alone is 26 KDa.

Sequence

VEIYTSRVLEAVNGTDARLKCTFSSFAPVGDALVTWNFRPLDGGPEQFVFYHYHIDPFQPMSEGRF
KDRVSWDGNPERYDASILLWKLQFDDNGTYTCQVKNPPDVGIVG

Host

Mouse

Reactivity

Human

Interspecies Antigen Sequence

Mouse (81); Rat (82)

Isotype

IgG2a Kappa

Quality Control Testing

Antibody Reactive Against Recombinant Protein.

Storage Buffer

In 1x PBS, pH 7.4

Storage Instruction

Store at -20°C or lower. Aliquot to avoid repeated freezing and thawing.

Applications

- Sandwich ELISA (Recombinant protein)

Detection limit for recombinant GST tagged MPZL2 is 1 ng/ml as a capture antibody.

[Protocol Download](#)

- ELISA

- Immunofluorescence

Immunofluorescence of monoclonal antibody to MPZL2 on HeLa cell . [antibody concentration 40 ug/ml]

Gene Info — MPZL2

Entrez GeneID[10205](#)**GeneBank Accession#**[NM_005797](#)**Protein Accession#**[NP_005788.1](#)**Gene Name**

MPZL2

Gene Alias

EVA, EVA1

Gene Description

myelin protein zero-like 2

Omim ID[604873](#)**Gene Ontology**[Hyperlink](#)

Gene Summary

Thymus development depends on a complex series of interactions between thymocytes and the stromal component of the organ. Epithelial V-like antigen (EVA) is expressed in thymus epithelium and strongly downregulated by thymocyte developmental progression. This gene is expressed in the thymus and in several epithelial structures early in embryogenesis. It is highly homologous to the myelin protein zero and, in thymus-derived epithelial cell lines, is poorly soluble in nonionic detergents, strongly suggesting an association to the cytoskeleton. Its capacity to mediate cell adhesion through a homophilic interaction and its selective regulation by T cell maturation might imply the participation of EVA in the earliest phases of thymus organogenesis. The protein bears a characteristic V-type domain and two potential N-glycosylation sites in the extracellular domain; a putative serine phosphorylation site for casein kinase 2 is also present in the cytoplasmic tail. Two transcript variants encoding the same protein have been found for this gene. [provided by RefSeq]

Other Designations

epithelial V-like antigen 1