

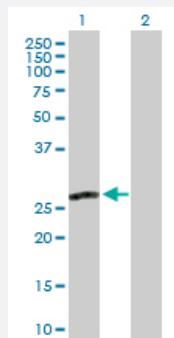
MaxPab®

MPZL2 purified MaxPab rabbit polyclonal antibody (D01P)

Catalog # H00010205-D01P

Size 100 ug

Applications



Western Blot (Transfected lysate)

Western Blot analysis of MPZL2 expression in transfected 293T cell line ([H00010205-T01](#)) by MPZL2 MaxPab polyclonal antibody.

Lane 1: MPZL2 transfected lysate(24.50 KDa).

Lane 2: Non-transfected lysate.

Specification

Product Description	Rabbit polyclonal antibody raised against a full-length human MPZL2 protein.
Immunogen	MPZL2 (NP_005788.1, 1 a.a. ~ 215 a.a) full-length human protein.
Sequence	MYGKSSTRAVLLLLGIQLTALWPAAVEYTSRVLEAVNGTDARLKCTFSSFAPVGDALTVTNFRP LDGGPEQFVFYYHIDPFQPMGRFKDRVSWDGNPERYDASILLWKLQFDDNGTYTCQVKNPPDV DGVIGEIRLSVVHTVRFSEIHFLALAIGSACALMIIMVNVVLFQHYRKKRWAERAHKVVEIKSKEEERL NQEKKVSVYLEDTD
Host	Rabbit
Reactivity	Human
Interspecies Antigen Sequence	Mouse (81); Rat (82)
Quality Control Testing	Antibody reactive against mammalian transfected lysate.
Storage Buffer	In 1x PBS, pH 7.4
Storage Instruction	Store at -20°C or lower. Aliquot to avoid repeated freezing and thawing.

Applications

- Western Blot (Transfected lysate)

Western Blot analysis of MPZL2 expression in transfected 293T cell line ([H00010205-T01](#)) by MPZL2 MaxPab polyclonal antibody.

Lane 1: MPZL2 transfected lysate(24.50 KDa).

Lane 2: Non-transfected lysate.

[Protocol Download](#)

Gene Info — MPZL2

Entrez GeneID [10205](#)

GeneBank Accession# [NM_005797.2](#)

Protein Accession# [NP_005788.1](#)

Gene Name MPZL2

Gene Alias EVA, EVA1

Gene Description myelin protein zero-like 2

Omim ID [604873](#)

Gene Ontology [Hyperlink](#)

Gene Summary

Thymus development depends on a complex series of interactions between thymocytes and the stromal component of the organ. Epithelial V-like antigen (EVA) is expressed in thymus epithelium and strongly downregulated by thymocyte developmental progression. This gene is expressed in the thymus and in several epithelial structures early in embryogenesis. It is highly homologous to the myelin protein zero and, in thymus-derived epithelial cell lines, is poorly soluble in nonionic detergents, strongly suggesting an association to the cytoskeleton. Its capacity to mediate cell adhesion through a homophilic interaction and its selective regulation by T cell maturation might imply the participation of EVA in the earliest phases of thymus organogenesis. The protein bears a characteristic V-type domain and two potential N-glycosylation sites in the extracellular domain; a putative serine phosphorylation site for casein kinase 2 is also present in the cytoplasmic tail. Two transcript variants encoding the same protein have been found for this gene. [provided by RefSeq]

Other Designations epithelial V-like antigen 1