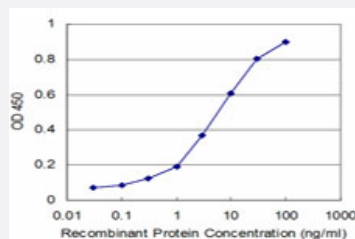


MPHOSPH10 monoclonal antibody (M04), clone 1E12

Catalog # H00010199-M04

Size 100 ug

Applications



Sandwich ELISA (Recombinant protein)

Detection limit for recombinant GST tagged MPHOSPH10 is approximately 0.3ng/ml as a capture antibody.



Western Blot detection against Immunogen (37.84 KDa) .

Specification

Product Description	Mouse monoclonal antibody raised against a partial recombinant MPHOSPH10.
Immunogen	MPHOSPH10 (NP_005782, 348 a.a. ~ 457 a.a) partial recombinant protein with GST tag. MW of the GST tag alone is 26 KDa.
Sequence	NVKKNSDEVKSSFEKRQEKMNKIASLEKELLEKKPWQLQGEVTAQKRPENSLLEETLHFDHAV RMAPVITEETTLQLEDIIKQRI RDQAWDDVVRKEKPKEDAYEYKKR
Host	Mouse
Reactivity	Human

Interspecies Antigen Sequence	Mouse (82); Rat (80)
Isotype	IgG1 Kappa
Quality Control Testing	Antibody Reactive Against Recombinant Protein. Western Blot detection against Immunogen (37.84 KDa) .
Storage Buffer	In 1x PBS, pH 7.4
Storage Instruction	Store at -20°C or lower. Aliquot to avoid repeated freezing and thawing.

Applications

- Western Blot (Recombinant protein)

[Protocol Download](#)

- Sandwich ELISA (Recombinant protein)

Detection limit for recombinant GST tagged MPHOSPH10 is approximately 0.3ng/ml as a capture antibody.

[Protocol Download](#)

- ELISA

Gene Info — MPHOSPH10

Entrez GeneID	10199
GeneBank Accession#	NM_005791
Protein Accession#	NP_005782
Gene Name	MPHOSPH10
Gene Alias	MPP10, MPP10P
Gene Description	M-phase phosphoprotein 10 (U3 small nucleolar ribonucleoprotein)
Omim ID	605503
Gene Ontology	Hyperlink

Gene Summary

This gene encodes a protein that is phosphorylated during mitosis. The protein localizes to the nucleolus during interphase and to the chromosomes during M phase. The protein is thought to be part of the U3 small nucleolar ribonucleoprotein complex, which is involved in rRNA processing. [provided by RefSeq]

Other Designations

M-phase phosphoprotein 10