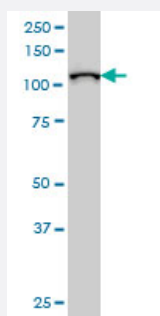


MPHOSPH10 monoclonal antibody (M02), clone 1B10

Catalog # H00010199-M02

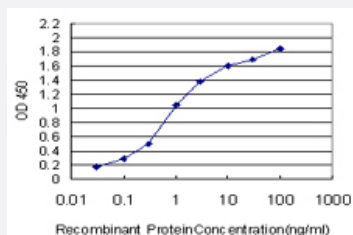
Size 100 ug

Applications



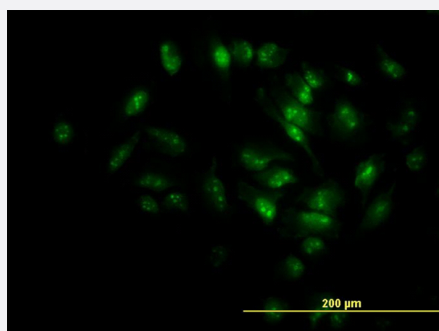
Western Blot (Cell lysate)

MPHOSPH10 monoclonal antibody (M02), clone 1B10 Western Blot analysis of MPHOSPH10 expression in HeLa S3 NE (Cat # L013V3).



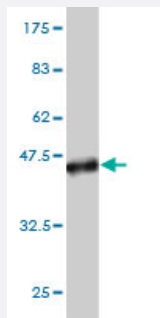
Sandwich ELISA (Recombinant protein)

Detection limit for recombinant GST tagged MPHOSPH10 is approximately 0.03ng/ml as a capture antibody.



Immunofluorescence

Immunofluorescence of monoclonal antibody to MPHOSPH10 on HeLa cell.
[antibody concentration 10 ug/ml]



Western Blot detection against Immunogen (37.84 KDa) .

Specification

Product Description	Mouse monoclonal antibody raised against a partial recombinant MPHOSPH10.
Immunogen	MPHOSPH10 (NP_005782, 348 a.a. ~ 457 a.a) partial recombinant protein with GST tag. MW of the GST tag alone is 26 KDa.
Sequence	NVKKNSDEVKSSFEKRQEKMNEKIASLEKELLEKKPWQLQGEVTAQKRPENSLLEETLHFDHAV RMAPVITEETTLQLEDIIKQRIRDQAWDDVVRKEKPKEDAYEYKKR
Host	Mouse
Reactivity	Human
Interspecies Antigen Sequence	Mouse (82); Rat (80)
Isotype	IgG1 Kappa
Quality Control Testing	Antibody Reactive Against Recombinant Protein. Western Blot detection against Immunogen (37.84 KDa) .
Storage Buffer	In 1x PBS, pH 7.4
Storage Instruction	Store at -20°C or lower. Aliquot to avoid repeated freezing and thawing.

Applications

- Western Blot (Cell lysate)

MPHOSPH10 monoclonal antibody (M02), clone 1B10 Western Blot analysis of MPHOSPH10 expression in Hela S3 NE (Cat # L013V3).

[Protocol Download](#)

- Western Blot (Recombinant protein)

[Protocol Download](#)

- Sandwich ELISA (Recombinant protein)

Detection limit for recombinant GST tagged MPHOSPH10 is approximately 0.03ng/ml as a capture antibody.

[Protocol Download](#)

- ELISA

- Immunofluorescence

Immunofluorescence of monoclonal antibody to MPHOSPH10 on HeLa cell. [antibody concentration 10 ug/ml]

Gene Info — MPHOSPH10

Entrez GeneID [10199](#)

GeneBank Accession# [NM_005791](#)

Protein Accession# [NP_005782](#)

Gene Name MPHOSPH10

Gene Alias MPP10, MPP10P

Gene Description M-phase phosphoprotein 10 (U3 small nucleolar ribonucleoprotein)

Omim ID [605503](#)

Gene Ontology [Hyperlink](#)

Gene Summary This gene encodes a protein that is phosphorylated during mitosis. The protein localizes to the nucleolus during interphase and to the chromosomes during M phase. The protein is thought to be part of the U3 small nucleolar ribonucleoprotein complex, which is involved in rRNA processing. [provided by RefSeq]

Other Designations M-phase phosphoprotein 10