

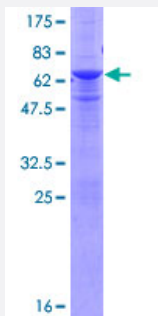
Full-Length

# RNF41 (Human) Recombinant Protein (P01)

Catalog # H00010193-P01

Size 25 ug, 10 ug

## Applications



## Specification

<b>Product Description</b>	Human RNF41 full-length ORF ( NP_005776.1, 1 a.a. - 317 a.a.) recombinant protein with GST-tag at N-terminal.
<b>Sequence</b>	MGYDVTRFQGDVDEDLICPGVLEEPVQAPHCEHAFACNACITQWFSQQQTCPVDRSVVTVAH LRPVPRIMRNMLSKLQIACDNAVFGCSAVVRLDNLMSHLSDCEHNPKRPTCEQGCGLEMPKD ELPNHNCKHLRSVVQQQQTIAELEKTSAEHKKQLAEQKRDQLLKAYMRAIRSVNPNLQNLLEETI EYNEILEWVNSLQPARVTRWGGMISTPDAVLQAVIKRSLVESGCPASVNELIENAHERSWPQGLA TLETRQMNRYYENYVAKRIPGKQAVVVMACENQHMGDDMVQEPGLVMIFAHGVVEI
<b>Host</b>	Wheat Germ (in vitro)
<b>Theoretical MW (kDa)</b>	62.3
<b>Preparation Method</b>	<a href="#">in vitro wheat germ expression system</a>
<b>Purification</b>	Glutathione Sepharose 4 Fast Flow
<b>Quality Control Testing</b>	12.5% SDS-PAGE Stained with Coomassie Blue.
<b>Storage Buffer</b>	50 mM Tris-HCl, 10 mM reduced Glutathione, pH=8.0 in the elution buffer.
<b>Storage Instruction</b>	Store at -80°C. Aliquot to avoid repeated freezing and thawing.
<b>Note</b>	Best use within three months from the date of receipt of this protein.

## Applications

- Enzyme-linked Immunoabsorbent Assay
- Western Blot (Recombinant protein)
- Antibody Production
- Protein Array

## Gene Info — RNF41

Entrez GeneID [10193](#)

GeneBank Accession# [NM\\_005785.2](#)

Protein Accession# [NP\\_005776.1](#)

Gene Name RNF41

Gene Alias MGC45228, NRDP1, SBB103

Gene Description ring finger protein 41

Gene Ontology [Hyperlink](#)

**Gene Summary** The protein encoded by this gene contains a RING finger, a motif present in a variety of functionally distinct proteins and known to be involved in protein-protein and protein-DNA interactions. The specific function of this protein has not yet been determined. Three alternatively spliced transcript variants encoding two distinct isoforms have been reported. [provided by RefSeq]

**Other Designations** neuregulin receptor degradation protein-1

## Pathway

- [Endocytosis](#)

## Disease

- [Genetic Predisposition to Disease](#)

- [Parkinson Disease](#)