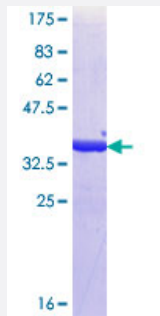


ALYREF (Human) Recombinant Protein (Q01)

Catalog # H00010189-Q01

Size 25 ug, 10 ug

Applications



Specification

Product Description	Human ALYREF partial ORF (NP_005773.2, 106 a.a. - 193 a.a.) recombinant protein with GST-tag at N-terminal.
Sequence	GKLLVSNLDFGVSDADIQELFAEFGTLKKAHVHYDRSGRSLGTADVHFERKADALKAMKQYNGV PLDGRPMNIQLVTSQIDAQRRPAQ
Host	Wheat Germ (in vitro)
Theoretical MW (kDa)	35.42
Interspecies Antigen Sequence	Rat (98)
Preparation Method	in vitro wheat germ expression system
Purification	Glutathione Sepharose 4 Fast Flow
Quality Control Testing	12.5% SDS-PAGE Stained with Coomassie Blue.
Storage Buffer	50 mM Tris-HCl, 10 mM reduced Glutathione, pH=8.0 in the elution buffer.
Storage Instruction	Store at -80°C. Aliquot to avoid repeated freezing and thawing.
Note	Best use within three months from the date of receipt of this protein.

Applications

- Enzyme-linked Immunoabsorbent Assay
- Western Blot (Recombinant protein)
- Antibody Production
- Protein Array

Gene Info — ALYREF

Entrez GeneID	10189
GeneBank Accession#	NM_005782
Protein Accession#	NP_005773.2
Gene Name	ALYREF
Gene Alias	ALY, ALY/REF, BEF, REF, THOC4
Gene Description	Aly/REF export factor
Omim ID	604171
Gene Ontology	Hyperlink
Gene Summary	The protein encoded by this gene is a heat stable, nuclear protein and functions as a molecular chaperone. It is thought to regulate dimerization, DNA binding, and transcriptional activity of basic region-leucine zipper (bZIP) proteins. [provided by RefSeq]
Other Designations	THO complex 4; THO complex subunit 4; ally of AML-1 and LEF-1; bZIP enhancing factor; bZIP-enhancing factor BEF; tho4; transcriptional coactivator Aly/REF