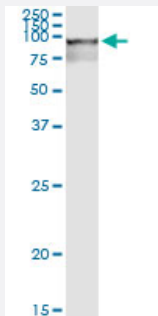


RBM5 (Human) IP-WB Antibody Pair

Catalog # H00010181-PW1

Size 1 Set

Applications



Immunoprecipitation of RBM5 transfected lysate using rabbit polyclonal anti-RBM5 and Protein A Magnetic Bead ([U0007](#)), and immunoblotted with mouse purified polyclonal anti-RBM5.

Specification

Product Description	This IP-WB antibody pair set comes with one antibody for immunoprecipitation and another to detect the precipitated protein in western blot.
Reactivity	Human
Interspecies Antigen Sequence	Mouse (97); Rat (97)
Quality Control Testing	Immunoprecipitation-Western Blot (IP-WB) Immunoprecipitation of RBM5 transfected lysate using rabbit polyclonal anti-RBM5 and Protein A Magnetic Bead (U0007), and immunoblotted with mouse purified polyclonal anti-RBM5.
Supplied Product	Antibody pair set content: 1. Antibody pair for IP: rabbit polyclonal anti-RBM5 (300 ul) 2. Antibody pair for WB: mouse purified polyclonal anti-RBM5 (50 ug)
Storage Instruction	Store reagents of the antibody pair set at -20°C or lower. Please aliquot to avoid repeated freeze thaw cycle. Reagents should be returned to -20°C storage immediately after use.

Applications

- Immunoprecipitation-Western Blot

[Protocol Download](#)

Gene Info — RBM5

Entrez GeneID	10181
Gene Name	RBM5
Gene Alias	FLJ39876, G15, H37, LUCA15, RMB5
Gene Description	RNA binding motif protein 5
Omim ID	606884
Gene Ontology	Hyperlink
Other Designations	-