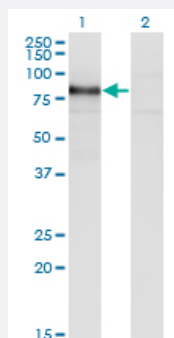


RBM5 monoclonal antibody (M02), clone 3G6

Catalog # H00010181-M02

Size 100 ug

Applications

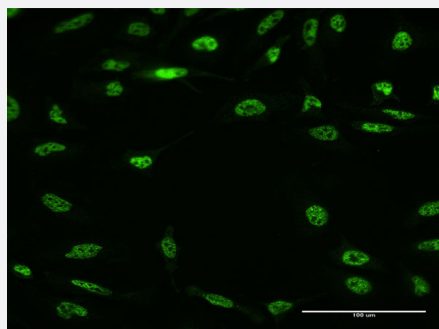


Western Blot (Transfected lysate)

Western Blot analysis of RBM5 expression in transfected 293T cell line by RBM5 monoclonal antibody (M02), clone 3G6.

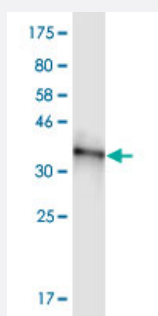
Lane 1: RBM5 transfected lysate (Predicted MW: 61.5 kDa).

Lane 2: Non-transfected lysate.



Immunofluorescence

Immunofluorescence of monoclonal antibody to RBM5 on HeLa cell . [antibody concentration 10 ug/ml]



Western Blot detection against Immunogen (37.73 kDa) .

Specification

Product Description

Mouse monoclonal antibody raised against a partial recombinant RBM5.

Immunogen	RBM5 (AAH02957, 75 a.a. ~ 184 a.a) partial recombinant protein with GST tag. MW of the GST tag alone is 26 KDa.
Sequence	GYHSDGDYGEHDYRHDISDERESKTIMLRGLPITTESDIREMMESFEGPQPADVRLMKRKTGVSR GFAFVEFYHLQDATSWMEANQKKLVIQGKHAMHYSNPRPKFED
Host	Mouse
Reactivity	Human
Interspecies Antigen Sequence	Mouse (97); Rat (97)
Isotype	IgG2a Kappa
Quality Control Testing	Antibody Reactive Against Recombinant Protein. Western Blot detection against Immunogen (37.73 KDa) .
Storage Buffer	In 1x PBS, pH 7.4
Storage Instruction	Store at -20°C or lower. Aliquot to avoid repeated freezing and thawing.

Applications

- Western Blot (Transfected lysate)

Western Blot analysis of RBM5 expression in transfected 293T cell line by RBM5 monoclonal antibody (M02), clone 3G6.

Lane 1: RBM5 transfected lysate (Predicted MW: 61.5 KDa).

Lane 2: Non-transfected lysate.

[Protocol Download](#)

- Western Blot (Recombinant protein)

[Protocol Download](#)

- ELISA

- Immunofluorescence

Immunofluorescence of monoclonal antibody to RBM5 on HeLa cell . [antibody concentration 10 ug/ml]

Gene Info — RBM5

Entrez GeneID

[10181](#)

GeneBank Accession#	BC002957
Protein Accession#	AAH02957
Gene Name	RBM5
Gene Alias	FLJ39876, G15, H37, LUCA15, RMB5
Gene Description	RNA binding motif protein 5
Omim ID	606884
Gene Ontology	Hyperlink
Other Designations	-