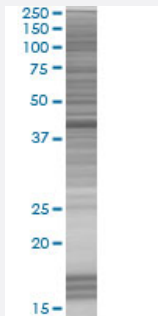


SORBS3 293T Cell Transient Overexpression Lysate(Denatured)

Catalog # H00010174-T01

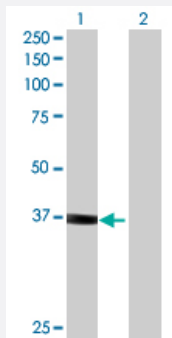
Size 100 uL

Applications



SDS-PAGE Gel

SORBS3 transfected lysate.



Western Blot

Lane 1: SORBS3 transfected lysate (36.7 KDa)

Lane 2: Non-transfected lysate.

Specification

Transfected Cell Line	293T
Plasmid	pCMV-SORBS3 full-length
Host	Human
Theoretical MW (kDa)	36.7
Interspecies Antigen Sequence	Mouse (84); Rat (84)

Quality Control Testing

Transient overexpression cell lysate was tested with Anti-SORBS3 antibody ([H00010174-B01](#)) by Western Blots.
SDS-PAGE Gel
SORBS3 transfected lysate.
Western Blot
Lane 1: SORBS3 transfected lysate (36.7 KDa)
Lane 2: Non-transfected lysate.

Storage Buffer

1X Sample Buffer (50 mM Tris-HCl, 2% SDS, 10% glycerol, 300 mM 2-mercaptoethanol, 0.01% Bromophenol blue)

Storage Instruction

Store at -80°C. Aliquot to avoid repeated freezing and thawing.

Applications

- Western Blot

Gene Info — SORBS3

Entrez GeneID[10174](#)**GeneBank Accession#**[NM_001018003.1](#)**Protein Accession#**[-](#)**Gene Name**

SORBS3

Gene Alias

SCAM-1, SCAM1, SH3D4, VINEXIN

Gene Description

sorbin and SH3 domain containing 3

Omim ID[610795](#)**Gene Ontology**[Hyperlink](#)**Gene Summary**

The SORBS3 gene encodes 2 isoforms vinexin-alpha and -beta that are vinculin (VCL; MIM 193065)-binding cytoskeletal proteins involved in focal adhesion and cell-cell adhesion (Kioka et al., 1999 [PubMed 9885244]).[supplied by OMIM]

Other Designations

vinexin beta (SH3-containing adaptor molecule-1)