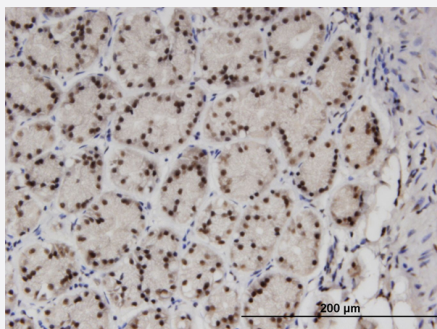


ZNF256 monoclonal antibody (M01), clone 3H7

Catalog # H00010172-M01

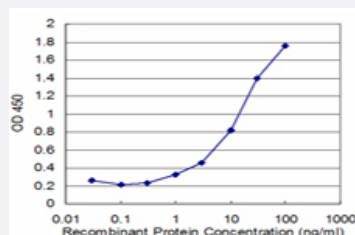
Size 100 ug

Applications



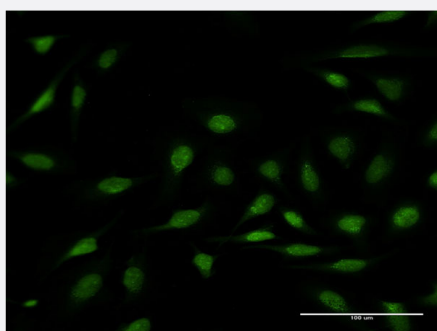
Immunohistochemistry (Formalin/PFA-fixed paraffin-embedded sections)

Immunoperoxidase of monoclonal antibody to ZNF256 on formalin-fixed paraffin-embedded human stomach. [antibody concentration 3 ug/ml]



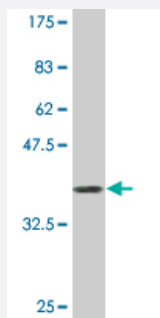
Sandwich ELISA (Recombinant protein)

Detection limit for recombinant GST tagged ZNF256 is approximately 0.3ng/ml as a capture antibody.



Immunofluorescence

Immunofluorescence of monoclonal antibody to ZNF256 on HeLa cell . [antibody concentration 10 ug/ml]



Western Blot detection against Immunogen (37.51 KDa) .

Specification

| | |
|--------------------------------|---|
| Product Description | Mouse monoclonal antibody raised against a partial recombinant ZNF256. |
| Immunogen | ZNF256 (NP_005764.2, 521 a.a. ~ 627 a.a) partial recombinant protein with GST tag. MW of the GST tag alone is 26 KDa. |
| Sequence | CNECGKFFSQSSSLIRHRRSHTGERPYECSECWKSFSNSSLVKHRRVHTGERPYECSECGKS FSQSSNLTNHQRIHSGERPYECSDCGKFFTFNSNLLKHQNVHKG |
| Host | Mouse |
| Reactivity | Human |
| Isotype | IgG2a Kappa |
| Quality Control Testing | Antibody Reactive Against Recombinant Protein. Western Blot detection against Immunogen (37.51 KDa) . |
| Storage Buffer | In 1x PBS, pH 7.4 |
| Storage Instruction | Store at -20°C or lower. Aliquot to avoid repeated freezing and thawing. |

Applications

- Western Blot (Recombinant protein)

[Protocol Download](#)

- Immunohistochemistry (Formalin/PFA-fixed paraffin-embedded sections)

Immunoperoxidase of monoclonal antibody to ZNF256 on formalin-fixed paraffin-embedded human stomach. [antibody concentration 3 ug/ml]

[Protocol Download](#)

- Sandwich ELISA (Recombinant protein)

Detection limit for recombinant GST tagged ZNF256 is approximately 0.3ng/ml as a capture antibody.

[Protocol Download](#)

- ELISA

- Immunofluorescence

Immunofluorescence of monoclonal antibody to ZNF256 on HeLa cell . [antibody concentration 10 ug/ml]

Gene Info — ZNF256

| | |
|---------------|-----------------------|
| Entrez GeneID | 10172 |
|---------------|-----------------------|

| | |
|---------------------|---------------------------|
| GeneBank Accession# | NM_005773 |
|---------------------|---------------------------|

| | |
|--------------------|-----------------------------|
| Protein Accession# | NP_005764.2 |
|--------------------|-----------------------------|

| | |
|-----------|--------|
| Gene Name | ZNF256 |
|-----------|--------|

| | |
|------------|---------------|
| Gene Alias | BMZF-3, BMZF3 |
|------------|---------------|

| | |
|------------------|-------------------------|
| Gene Description | zinc finger protein 256 |
|------------------|-------------------------|

| | |
|---------|------------------------|
| Omim ID | 606956 |
|---------|------------------------|

| | |
|---------------|---------------------------|
| Gene Ontology | Hyperlink |
|---------------|---------------------------|

| | |
|--------------------|---------------------------|
| Other Designations | bone marrow zinc finger 3 |
|--------------------|---------------------------|