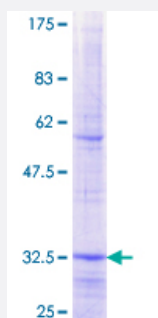


SLC25A15 (Human) Recombinant Protein (Q01)

Catalog # H00010166-Q01

Size 25 ug, 10 ug

Applications



Specification

Product Description	Human SLC25A15 partial ORF (NP_055067.1, 237 a.a. - 301 a.a.) recombinant protein with GST-tag at N-terminal.
Sequence	IQVLSMSGKQAGFIRTFINVVKNEGITALYSLKPTMIRAFPANGALFLAYEYSRKLMMNQLEAY
Host	Wheat Germ (in vitro)
Theoretical MW (kDa)	32.89
Preparation Method	in vitro wheat germ expression system
Purification	Glutathione Sepharose 4 Fast Flow
Quality Control Testing	12.5% SDS-PAGE Stained with Coomassie Blue.
Storage Buffer	50 mM Tris-HCl, 10 mM reduced Glutathione, pH=8.0 in the elution buffer.
Storage Instruction	Store at -80°C. Aliquot to avoid repeated freezing and thawing.
Note	Best use within three months from the date of receipt of this protein.

Applications

- Enzyme-linked Immunoabsorbent Assay
- Western Blot (Recombinant protein)
- Antibody Production
- Protein Array

Gene Info — SLC25A15

Entrez GeneID [10166](#)

GeneBank Accession# [NM_014252](#)

Protein Accession# [NP_055067.1](#)

Gene Name SLC25A15

Gene Alias D13S327, HHH, ORC1, ORNT1

Gene Description solute carrier family 25 (mitochondrial carrier; ornithine transporter) member 15

Omim ID [238970 603861](#)

Gene Ontology [Hyperlink](#)

Gene Summary This gene is a member of the mitochondrial carrier family. The encoded protein transports ornithine across the inner mitochondrial membrane from the cytosol to the mitochondrial matrix. The protein is an essential component of the urea cycle, and functions in ammonium detoxification and biosynthesis of the amino acid arginine. Mutations in this gene result in hyperornithinemia-hyperammonemia-homocitrullinuria (HHH) syndrome. There is a pseudogene of this locus on the Y chromosome

Other Designations OTTHUMP00000042249|ornithine transporter 1