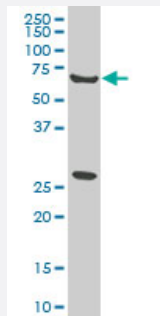


# WASF2 monoclonal antibody (M01), clone 1F7

Catalog # H00010163-M01

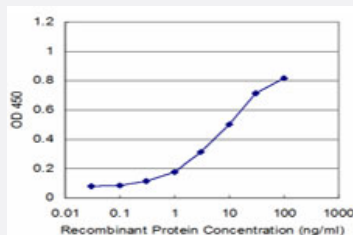
Size 100 ug

## Applications



### Western Blot (Cell lysate)

WASF2 monoclonal antibody (M01), clone 1F7. Western Blot analysis of WASF2 expression in HeLa ( Cat # L013V1 ).



### Sandwich ELISA (Recombinant protein)

Detection limit for recombinant GST tagged WASF2 is approximately 0.3ng/ml as a capture antibody.

## Specification

<b>Product Description</b>	Mouse monoclonal antibody raised against a partial recombinant WASF2.
<b>Immunogen</b>	WASF2 (NP_008921, 73 a.a. ~ 172 a.a) partial recombinant protein with GST tag. MW of the GST tag alone is 26 KDa.
<b>Sequence</b>	DRLQVKVTQLDPKEEEVSLQGINTRKAFRSSTIQDQKLFDRNSLPVPVLETYNTCDTPPPLNNLTPYRDDGKEALKFYTDPSYFFDLWKEKMLQDTKDIM
<b>Host</b>	Mouse
<b>Reactivity</b>	Human
<b>Isotype</b>	IgG2b Kappa

Quality Control Testing	Antibody Reactive Against Recombinant Protein.
Storage Buffer	In 1x PBS, pH 7.4
Storage Instruction	Store at -20°C or lower. Aliquot to avoid repeated freezing and thawing.

## Applications

- Western Blot (Cell lysate)

WASF2 monoclonal antibody (M01), clone 1F7. Western Blot analysis of WASF2 expression in HeLa ( Cat # L013V1 ).

[Protocol Download](#)

- Sandwich ELISA (Recombinant protein)

Detection limit for recombinant GST tagged WASF2 is approximately 0.3ng/ml as a capture antibody.

[Protocol Download](#)

- ELISA

## Gene Info — WASF2

Entrez GeneID	<a href="#">10163</a>
---------------	-----------------------

GeneBank Accession#	<a href="#">NM_006990</a>
---------------------	---------------------------

Protein Accession#	<a href="#">NP_008921</a>
--------------------	---------------------------

Gene Name	WASF2
-----------	-------

Gene Alias	SCAR2, WAVE2, dJ393P12.2
------------	--------------------------

Gene Description	WAS protein family, member 2
------------------	------------------------------

Omim ID	<a href="#">605875</a>
---------	------------------------

Gene Ontology	<a href="#">Hyperlink</a>
---------------	---------------------------

Gene Summary	<p>This gene encodes a member of the Wiskott-Aldrich syndrome protein family. The gene product is a protein that forms a multiprotein complex that links receptor kinases and actin. Binding to actin occurs through a C-terminal verprolin homology domain in all family members. The multiprotein complex serves to transduce signals that involve changes in cell shape, motility or function. The published map location (PMID:10381382) has been changed based on recent genomic sequence comparisons, which indicate that the expressed gene is located on chromosome 1, and a pseudogene may be located on chromosome X. [provided by RefSeq]</p>
--------------	--

**Other Designations**

IMD2|OTTHUMP00000003471|WASP family Verprolin-homologous protein 2|suppressor of cycli  
c-AMP receptor (WASP-family)

## Pathway

- [Adherens junction](#)
- [Fc gamma R-mediated phagocytosis](#)
- [Regulation of actin cytoskeleton](#)