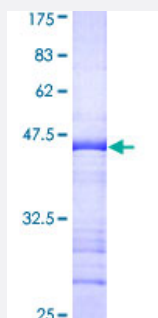


TRIM28 (Human) Recombinant Protein (Q01)

Catalog # H00010155-Q01

Size 25 ug, 10 ug

Applications



Specification

Product Description	Human TRIM28 partial ORF (AAH04978, 379 a.a. - 524 a.a.) recombinant protein with GST-tag at N-terminal.
Sequence	MDPVEPHGEMKFQWDLNAWTKSAEAFGKIVAERPGTNSTGPAPMAPPRAPGPLSKQGSGSSQ PMEYQEGYGFSGDDPYSSAEPHVSGVKRSRSGEGEVSGLMRKVPRVSLERLDLDTADSQP PVFKVFPGSTTEDYNLMIER
Host	Wheat Germ (in vitro)
Theoretical MW (kDa)	41.69
Interspecies Antigen Sequence	Mouse (93); Rat (93)
Preparation Method	in vitro wheat germ expression system
Purification	Glutathione Sepharose 4 Fast Flow
Quality Control Testing	12.5% SDS-PAGE Stained with Coomassie Blue.
Storage Buffer	50 mM Tris-HCl, 10 mM reduced Glutathione, pH=8.0 in the elution buffer.
Storage Instruction	Store at -80°C. Aliquot to avoid repeated freezing and thawing.
Note	Best use within three months from the date of receipt of this protein.

Applications

- Enzyme-linked Immunoabsorbent Assay
- Western Blot (Recombinant protein)
- Antibody Production
- Protein Array

Gene Info — TRIM28

Entrez GeneID [10155](#)

GeneBank Accession# [BC004978](#)

Protein Accession# [AAH04978](#)

Gene Name TRIM28

Gene Alias FLJ29029, KAP1, RNF96, TF1B, TIF1B

Gene Description tripartite motif-containing 28

Omim ID [601742](#)

Gene Ontology [Hyperlink](#)

Gene Summary The protein encoded by this gene mediates transcriptional control by interaction with the Kruppel-associated box repression domain found in many transcription factors. The protein localizes to the nucleus and is thought to associate with specific chromatin regions. The protein is a member of the tripartite motif family. This tripartite motif includes three zinc-binding domains, a RING, a B-box type 1 and a B-box type 2, and a coiled-coil region. [provided by RefSeq]

Other Designations KRAB-associated protein 1|nuclear corepressor KAP-1|transcriptional intermediary factor 1-beta|tripartite motif-containing 28 protein