

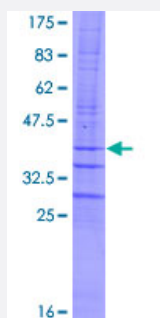
Full-Length

## C4orf6 (Human) Recombinant Protein (P01)

Catalog # H00010141-P01

Size 10 ug, 25 ug

### Applications



### Specification

<b>Product Description</b>	Human C4orf6 full-length ORF ( NP_005741.1, 1 a.a. - 93 a.a.) recombinant protein with GST-tag at N-terminal.
<b>Sequence</b>	MDTQKQIHKTHNSKNQFFTIFFFLSVEFGKEGTRKNFYLLLSIGHYGRKSRRADLGTADTADKTEPE CFAASWTFDPNPSVTVSGAHSTAVHQ
<b>Host</b>	Wheat Germ (in vitro)
<b>Theoretical MW (kDa)</b>	36.9
<b>Preparation Method</b>	<a href="#">in vitro wheat germ expression system</a>
<b>Purification</b>	Glutathione Sepharose 4 Fast Flow
<b>Quality Control Testing</b>	12.5% SDS-PAGE Stained with Coomassie Blue.
<b>Storage Buffer</b>	50 mM Tris-HCl, 10 mM reduced Glutathione, pH=8.0 in the elution buffer.
<b>Storage Instruction</b>	Store at -80°C. Aliquot to avoid repeated freezing and thawing.
<b>Note</b>	Best use within three months from the date of receipt of this protein.

## Applications

- Enzyme-linked Immunoabsorbent Assay
- Western Blot (Recombinant protein)
- Antibody Production
- Protein Array

## Gene Info — C4orf6

**Entrez GeneID** [10141](#)

**GeneBank Accession#** [NM\\_005750.2](#)

**Protein Accession#** [NP\\_005741.1](#)

**Gene Name** C4orf6

**Gene Alias** aC1

**Gene Description** chromosome 4 open reading frame 6

**Gene Ontology** [Hyperlink](#)

**Gene Summary** This gene is expressed in neuroblastoma; however, the function of this gene is not yet determined . [provided by RefSeq]

**Other Designations** expressed in neuroblastoma