

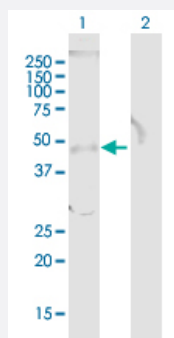
MaxPab®

TOB1 purified MaxPab mouse polyclonal antibody (B01P)

Catalog # H00010140-B01P

Size 50 ug

Applications

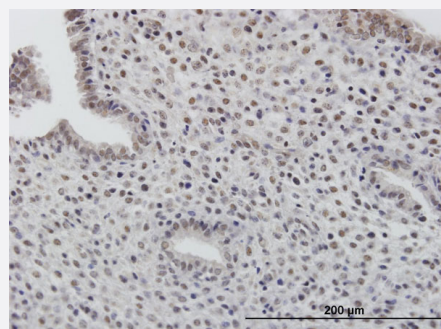


Western Blot (Transfected lysate)

Western Blot analysis of TOB1 expression in transfected 293T cell line ([H00010140-T01](#)) by TOB1 MaxPab polyclonal antibody.

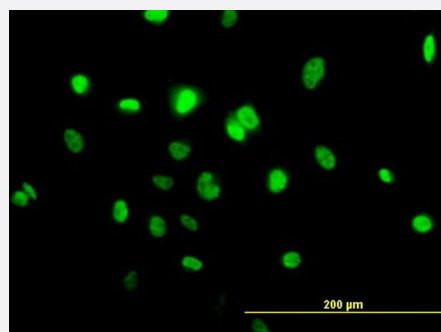
Lane 1: TOB1 transfected lysate(37.95 KDa).

Lane 2: Non-transfected lysate.



Immunohistochemistry (Formalin/PFA-fixed paraffin-embedded sections)

Immunoperoxidase of purified MaxPab antibody to TOB1 on formalin-fixed paraffin-embedded human endometrium. [antibody concentration 3 ug/ml]



Immunofluorescence

Immunofluorescence of purified MaxPab antibody to TOB1 on HeLa cell. [antibody concentration 10 ug/ml]

Specification

Product Description

Mouse polyclonal antibody raised against a full-length human TOB1 protein.

Immunogen	TOB1 (NP_005740.1, 1 a.a. ~ 345 a.a) full-length human protein.
Sequence	<p>MQLEIQVALNFIISYL YNKLPRRRVNIFGEELERLLKKKYEGHWYPEKPYKGSGFRCIHIGEKVDPVIE</p> <p>QASKESGLDIDDVRGNLPQDLSVWIDPFEVSYQIGEKGPVKVLYDDNNGCELDKEIKNSFNP</p> <p>EAQVFMPISDPASSVSSSPSPFGHSAAVSPTFMPRSTQPLTFTTATFAATKFGSTKMKNNGRS</p> <p>NKVARTSPINLGLNVNDLLKQKAISSSMHSYGLGLGSQQQPQQQQQPAQPPPPPPPPQQQQQ</p> <p>QKTSALSPNAKEFIFPNMQGQGSSTNGMFPGDSPLNLSPLQYSNAFDVFAAYGGLNEKSFVDGL</p> <p>NFSLNNMQYSNQFQPVMAN</p>
Host	Mouse
Reactivity	Human
Interspecies Antigen Sequence	Mouse (91); Rat (91)
Quality Control Testing	Antibody reactive against mammalian transfected lysate.
Storage Buffer	In 1x PBS, pH 7.4
Storage Instruction	Store at -20°C or lower. Aliquot to avoid repeated freezing and thawing.

Applications

- Western Blot (Transfected lysate)

Western Blot analysis of TOB1 expression in transfected 293T cell line ([H00010140-T01](#)) by TOB1 MaxPab polyclonal antibody.

Lane 1: TOB1 transfected lysate(37.95 KDa).

Lane 2: Non-transfected lysate.

[Protocol Download](#)

- Immunohistochemistry (Formalin/PFA-fixed paraffin-embedded sections)

Immunoperoxidase of purified MaxPab antibody to TOB1 on formalin-fixed paraffin-embedded human endometrium. [antibody concentration 3 ug/ml]

[Protocol Download](#)

- Immunofluorescence

Immunofluorescence of purified MaxPab antibody to TOB1 on HeLa cell. [antibody concentration 10 ug/ml]

Gene Info — TOB1

Entrez GeneID [10140](#)

GeneBank Accession#	NM_005749
Protein Accession#	NP_005740.1
Gene Name	TOB1
Gene Alias	APRO6, MGC104792, MGC34446, PIG49, TOB, TROB, TROB1
Gene Description	transducer of ERBB2, 1
Omim ID	605523
Gene Ontology	Hyperlink
Gene Summary	<p>This gene encodes a member of the tob/btg1 family of anti-proliferative proteins that have the potential to regulate cell growth. When exogenously expressed, this protein suppresses cell growth in tissue culture. The protein undergoes phosphorylation by a serine/threonine kinase, 90 kDa ribosomal S6 kinase. Interactions of this protein with the v-erb-b2 erythroblastic leukemia viral oncogene homolog 2 gene product p185 interferes with growth suppression. This protein inhibits T cell proliferation and transcription of cytokines and cyclins. The protein interacts with both mothers against decapentaplegic Drosophila homolog 2 and 4 to enhance their DNA binding activity. This interaction inhibits interleukin 2 transcription in T cells. [provided by RefSeq]</p>
Other Designations	transducer of erbB-2