

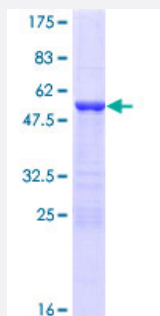
Full-Length

YAF2 (Human) Recombinant Protein (P01)

Catalog # H00010138-P01

Size 10 ug, 25 ug

Applications



Specification

Product Description	Human YAF2 full-length ORF (NP_005739.2, 1 a.a. - 180 a.a.) recombinant protein with GST-tag at N-terminal.
Sequence	MGDKKSPTRPKRQPKPSSDEGYWDCSVCTFRNSAEAFKCMCDVRKGTSTRKPRPVSQLVAQ QVTQQFVPPTQSKKEKKDKVEKEKSEKETTSKKNSHKKTRPRLKNVDRSSAQHLEVTVGDLTVII TDFKEKTKSPPASSAASADQHSQSGSSSDNTERGMSRSSSPRGEASSLNGESH
Host	Wheat Germ (in vitro)
Theoretical MW (kDa)	46.3
Preparation Method	in vitro wheat germ expression system
Purification	Glutathione Sepharose 4 Fast Flow
Quality Control Testing	12.5% SDS-PAGE Stained with Coomassie Blue.
Storage Buffer	50 mM Tris-HCl, 10 mM reduced Glutathione, pH=8.0 in the elution buffer.
Storage Instruction	Store at -80°C. Aliquot to avoid repeated freezing and thawing.
Note	Best use within three months from the date of receipt of this protein.

Applications

- Enzyme-linked Immunoabsorbent Assay
- Western Blot (Recombinant protein)
- Antibody Production
- Protein Array

Gene Info — YAF2

Entrez GeneID [10138](#)

GeneBank Accession# [NM_005748.3](#)

Protein Accession# [NP_005739.2](#)

Gene Name YAF2

Gene Alias MGC41856

Gene Description YY1 associated factor 2

Omim ID [607534](#)

Gene Ontology [Hyperlink](#)

Gene Summary The protein encoded by this gene interacts with YY1, a zinc finger protein involved in negative regulation of muscle-restricted genes. This gene product itself contains a single N-terminal C2-X10-C2 zinc finger, and in contrast to YY1, is up-regulated during myogenic differentiation. It also facilitates proteolytic cleavage of YY1 by the calcium-activated protease, m-calpain, suggesting a mechanism by which this protein antagonizes the negative effect of YY1. [provided by RefSeq]

Other Designations -

Disease

- [Celiac Disease](#)
- [Genetic Predisposition to Disease](#)

- [Tobacco Use Disorder](#)