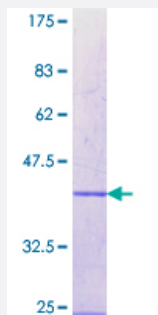


RBM12 (Human) Recombinant Protein (Q01)

Catalog # H00010137-Q01

Size 25 ug, 10 ug

Applications



Specification

Product Description	Human RBM12 partial ORF (NP_006038.2, 834 a.a. - 932 a.a.) recombinant protein with GST-tag at N-terminal.
Sequence	GPGPIHIGGPPGFASSSGKPGPTVIKVNMPFTVSIIDEILDFYGYQVIPGSVCLKYNEKGMPTGEA MVAFESRDEATAAVIDLNDRPIGSRKVKLVLG
Host	Wheat Germ (in vitro)
Theoretical MW (kDa)	36.63
Interspecies Antigen Sequence	Mouse (81); Rat (77)
Preparation Method	in vitro wheat germ expression system
Purification	Glutathione Sepharose 4 Fast Flow
Quality Control Testing	12.5% SDS-PAGE Stained with Coomassie Blue.
Storage Buffer	50 mM Tris-HCl, 10 mM reduced Glutathione, pH=8.0 in the elution buffer.
Storage Instruction	Store at -80°C. Aliquot to avoid repeated freezing and thawing.
Note	Best use within three months from the date of receipt of this protein.

Applications

- Enzyme-linked Immunoabsorbent Assay
- Western Blot (Recombinant protein)
- Antibody Production
- Protein Array

Gene Info — RBM12

Entrez GeneID	10137
---------------	-----------------------

GeneBank Accession#	NM_006047
---------------------	---------------------------

Protein Accession#	NP_006038.2
--------------------	-----------------------------

Gene Name	RBM12
-----------	-------

Gene Alias	HRIHFB2091, KIAA0765, SWAN
------------	----------------------------

Gene Description	RNA binding motif protein 12
------------------	------------------------------

Omim ID	607179
---------	------------------------

Gene Ontology	Hyperlink
---------------	---------------------------

Gene Summary	This gene encodes a protein that contains several RNA-binding motifs, potential transmembrane domains, and proline-rich regions. This gene and the gene for copine I overlap at map location 20 q11.21. Alternative splicing in the 5' UTR results in two transcript variants. Both variants encode the same protein. [provided by RefSeq]
--------------	--

Other Designations	OTTHUMP00000030766 OTTHUMP00000062717 OTTHUMP00000062718
--------------------	--