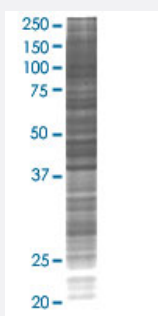


ELA3A 293T Cell Transient Overexpression Lysate(Denatured)

Catalog # H00010136-T02

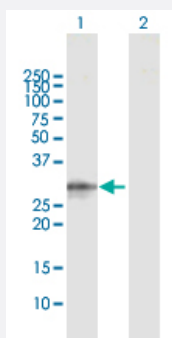
Size 100 uL

Applications



SDS-PAGE Gel

ELA3A transfected lysate.



Western Blot

Lane 1: ELA3A transfected lysate (29.50 KDa)

Lane 2: Non-transfected lysate.

Specification

Transfected Cell Line	293T
Plasmid	pCMV-ELA3A full-length
Host	Human
Theoretical MW (kDa)	29.5
Interspecies Antigen Sequence	Mouse (72)

Quality Control Testing

Transient overexpression cell lysate was tested with Anti-ELA3A antibody ([H00010136-D01](#)) by Western Blots.
SDS-PAGE Gel
ELA3A transfected lysate.
Western Blot
Lane 1: ELA3A transfected lysate (29.50 KDa)
Lane 2: Non-transfected lysate.

Storage Buffer

1X Sample Buffer (50 mM Tris-HCl, 2% SDS, 10% glycerol, 300 mM 2-mercaptoethanol, 0.01% Bromophenol blue)

Storage Instruction

Store at -80°C. Aliquot to avoid repeated freezing and thawing.

Applications

- Western Blot

Gene Info — ELA3A

Entrez GeneID

[10136](#)

GeneBank Accession#

[NM_005747.3](#)

Protein Accession#

[NP_005738.3](#)

Gene Name

ELA3A

Gene Alias

ELA3

Gene Description

elastase 3A, pancreatic

Gene Ontology

[Hyperlink](#)

Gene Summary

Elastases form a subfamily of serine proteases that hydrolyze many proteins in addition to elastin. Humans have six elastase genes which encode the structurally similar proteins elastase 1, 2, 2A, 2B, 3A, and 3B. Unlike other elastases, elastase 3A has little elastolytic activity. Like most of the human elastases, elastase 3A is secreted from the pancreas as a zymogen and, like other serine proteases such as trypsin, chymotrypsin and kallikrein, it has a digestive function in the intestine. Elastase 3A preferentially cleaves proteins after alanine residues. Elastase 3A may also function in the intestinal transport and metabolism of cholesterol. Both elastase 3A and elastase 3B have been referred to as protease E and as elastase 1. [provided by RefSeq]

Other Designations

OTTHUMP00000002835|elastase 1|protease E