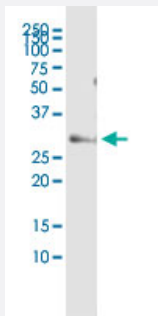


ELA3A (Human) IP-WB Antibody Pair

Catalog # H00010136-PW2

Size 1 Set

Applications



Immunoprecipitation of ELA3A transfected lysate using rabbit polyclonal anti-ELA3A and Protein A Magnetic Bead ([U0007](#)), and immunoblotted with mouse purified polyclonal anti-ELA3A.

Specification

Product Description	This IP-WB antibody pair set comes with one antibody for immunoprecipitation and another to detect the precipitated protein in western blot.
Reactivity	Human
Interspecies Antigen Sequence	Mouse (72)
Quality Control Testing	Immunoprecipitation-Western Blot (IP-WB) Immunoprecipitation of ELA3A transfected lysate using rabbit polyclonal anti-ELA3A and Protein A Magnetic Bead (U0007), and immunoblotted with mouse purified polyclonal anti-ELA3A.
Supplied Product	Antibody pair set content: 1. Antibody pair for IP: rabbit polyclonal anti-ELA3A (300 ul) 2. Antibody pair for WB: mouse purified polyclonal anti-ELA3A (50 ug)
Storage Instruction	Store reagents of the antibody pair set at -20°C or lower. Please aliquot to avoid repeated freeze thaw cycle. Reagents should be returned to -20°C storage immediately after use.

Applications

- Immunoprecipitation-Western Blot

[Protocol Download](#)

Gene Info — ELA3A

Entrez GeneID	10136
---------------	-----------------------

Gene Name	ELA3A
-----------	-------

Gene Alias	ELA3
------------	------

Gene Description	elastase 3A, pancreatic
------------------	-------------------------

Gene Ontology	Hyperlink
---------------	---------------------------

Gene Summary	Elastases form a subfamily of serine proteases that hydrolyze many proteins in addition to elastin. Humans have six elastase genes which encode the structurally similar proteins elastase 1, 2, 2A, 2B, 3A, and 3B. Unlike other elastases, elastase 3A has little elastolytic activity. Like most of the human elastases, elastase 3A is secreted from the pancreas as a zymogen and, like other serine proteases such as trypsin, chymotrypsin and kallikrein, it has a digestive function in the intestine. Elastase 3A preferentially cleaves proteins after alanine residues. Elastase 3A may also function in the intestinal transport and metabolism of cholesterol. Both elastase 3A and elastase 3B have been referred to as protease E and as elastase 1. [provided by RefSeq
--------------	--

Other Designations	OTTHUMP00000002835 elastase 1 protease E
--------------------	--