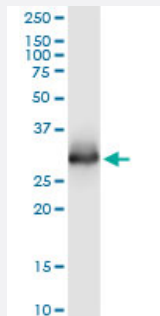


# ELA3A monoclonal antibody (M02), clone 3G4

Catalog # H00010136-M02

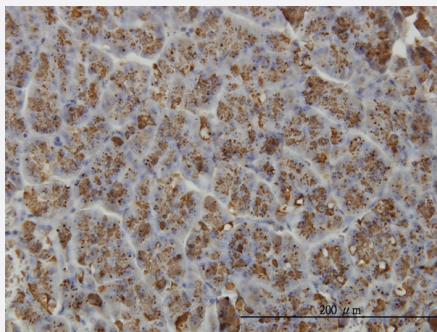
Size 100 ug

## Applications



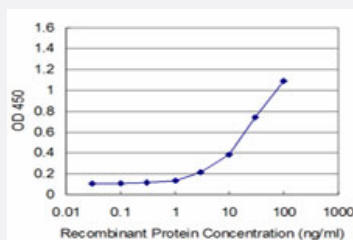
### Western Blot (Tissue lysate)

ELA3A monoclonal antibody (M02), clone 3G4. Western Blot analysis of ELA3A expression in human pancreas.



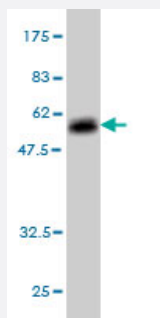
### Immunohistochemistry (Formalin/PFA-fixed paraffin-embedded sections)

Immunoperoxidase of monoclonal antibody to ELA3A on formalin-fixed paraffin-embedded human pancreas. [antibody concentration 3 ug/ml]



### Sandwich ELISA (Recombinant protein)

Detection limit for recombinant GST tagged ELA3A is approximately 1ng/ml as a capture antibody.



Western Blot detection against Immunogen (53.79 KDa) .

## Specification

<b>Product Description</b>	Mouse monoclonal antibody raised against a full length recombinant ELA3A.
<b>Immunogen</b>	ELA3A (AAH07028, 16 a.a. ~ 270 a.a) full-length recombinant protein with GST tag. MW of the GST tag alone is 26 KDa.
<b>Sequence</b>	SGYGPPSSHSSSRVVHGEDAVPYSWPWQVSLQYEKSGSFYHTCGGSLIAPDWVVTAGHCISRD LTYQVVLGEYNLAVKEGPEQVIPINSEELFVHPLWNRSCVACGNDIALIKLSRSAQLGDAVQLASL PPAGDILPNKTPCYITGWGRLYTNGPLPDKLQQARLPVVDYKHCSRWNWWGSTVKKTMVCAGG YIRSGCNGDSGGPLNCP TEDGGWQVHGVTSFVSGFGCNFMKPTV FTRVSAFIDWIEETIASH
<b>Host</b>	Mouse
<b>Reactivity</b>	Human
<b>Interspecies Antigen Sequence</b>	Mouse (72)
<b>Isotype</b>	IgG2a Kappa
<b>Quality Control Testing</b>	Antibody Reactive Against Recombinant Protein. Western Blot detection against Immunogen (53.79 KDa) .
<b>Storage Buffer</b>	In 1x PBS, pH 7.4
<b>Storage Instruction</b>	Store at -20°C or lower. Aliquot to avoid repeated freezing and thawing.

## Applications

### ● Western Blot (Tissue lysate)

ELA3A monoclonal antibody (M02), clone 3G4. Western Blot analysis of ELA3A expression in human pancreas.

[Protocol Download](#)

- Western Blot (Recombinant protein)

[Protocol Download](#)

- Immunohistochemistry (Formalin/PFA-fixed paraffin-embedded sections)

Immunoperoxidase of monoclonal antibody to ELA3A on formalin-fixed paraffin-embedded human pancreas. [antibody concentration 3 ug/ml]

[Protocol Download](#)

- Sandwich ELISA (Recombinant protein)

Detection limit for recombinant GST tagged ELA3A is approximately 1 ng/ml as a capture antibody.

[Protocol Download](#)

- ELISA

## Gene Info — ELA3A

Entrez GeneID [10136](#)

GeneBank Accession# [BC007028](#)

Protein Accession# [AAH07028](#)

Gene Name ELA3A

Gene Alias ELA3

Gene Description elastase 3A, pancreatic

Gene Ontology [Hyperlink](#)

**Gene Summary** Elastases form a subfamily of serine proteases that hydrolyze many proteins in addition to elastin. Humans have six elastase genes which encode the structurally similar proteins elastase 1, 2, 2A, 2B, 3A, and 3B. Unlike other elastases, elastase 3A has little elastolytic activity. Like most of the human elastases, elastase 3A is secreted from the pancreas as a zymogen and, like other serine proteases such as trypsin, chymotrypsin and kallikrein, it has a digestive function in the intestine. Elastase 3A preferentially cleaves proteins after alanine residues. Elastase 3A may also function in the intestinal transport and metabolism of cholesterol. Both elastase 3A and elastase 3B have been referred to as protease E and as elastase 1. [provided by RefSeq]

**Other Designations** OTTHUMP00000002835|elastase 1|protease E