

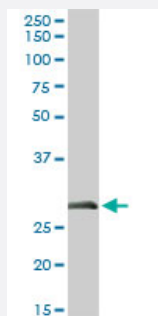
MaxPab®

ELA3A MaxPab rabbit polyclonal antibody (D01)

Catalog # H00010136-D01

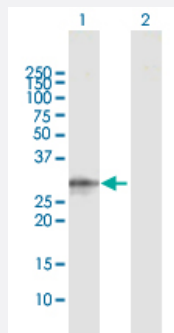
Size 100 uL

Applications



Western Blot (Tissue lysate)

ELA3A MaxPab rabbit polyclonal antibody. Western Blot analysis of ELA3A expression in human pancreas.

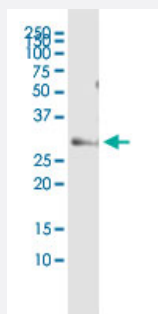


Western Blot (Transfected lysate)

Western Blot analysis of ELA3A expression in transfected 293T cell line ([H00010136-T02](#)) by ELA3A MaxPab polyclonal antibody.

Lane 1: ELA3A transfected lysate(29.50 KDa).

Lane 2: Non-transfected lysate.



Immunoprecipitation

Immunoprecipitation of ELA3A transfected lysate using anti-ELA3A MaxPab rabbit polyclonal antibody and Protein A Magnetic Bead, and immunoblotted with ELA3A purified MaxPab mouse polyclonal antibody (B01P) ([H00010136-B01P](#)).

Specification

Product Description

Rabbit polyclonal antibody raised against a full-length human ELA3A protein.

Immunogen	ELA3A (NP_005738.3, 1 a.a. ~ 270 a.a) full-length human protein.
Sequence	MMLRLLSLLLLVAVASGYGPPSSHSSSRVVHGEDAVPYSWPWQVSLQYEKSGSFYHTCGGSLIA PDWVVVTAGHCISRDLTYQVVLGEYNLAVKEGPEQVIPINSEELFVHPLWNRSCVACGNDIALIKLS RSAQLGDAVQLASLPPAGDILPNKTPCYITGWGRLYTNGPLPDKLQQARLPVVDYKHCSRWNWW GSTVKKTMVCAGGYIRSGCNGDSGGPLNCPTEDGGWQVHGVTSFVSGFGCNFIWKPTVFTRV AFIDWIEETIASH
Host	Rabbit
Reactivity	Human
Interspecies Antigen Sequence	Mouse (72)
Quality Control Testing	Antibody reactive against mammalian transfected lysate.
Storage Buffer	No additive
Storage Instruction	Store at -20°C or lower. Aliquot to avoid repeated freezing and thawing.

Applications

- Western Blot (Tissue lysate)

ELA3A MaxPab rabbit polyclonal antibody. Western Blot analysis of ELA3A expression in human pancreas.

[Protocol Download](#)

- Western Blot (Transfected lysate)

Western Blot analysis of ELA3A expression in transfected 293T cell line ([H00010136-T02](#)) by ELA3A MaxPab polyclonal antibody.

Lane 1: ELA3A transfected lysate(29.50 KDa).

Lane 2: Non-transfected lysate.

[Protocol Download](#)

- Immunoprecipitation

Immunoprecipitation of ELA3A transfected lysate using anti-ELA3A MaxPab rabbit polyclonal antibody and Protein A Magnetic Bead, and immunoblotted with ELA3A purified MaxPab mouse polyclonal antibody (B01P) ([H00010136-B01P](#)).

[Protocol Download](#)

Gene Info — ELA3A

Entrez GeneID	10136
GeneBank Accession#	NM_005747.3
Protein Accession#	NP_005738.3
Gene Name	ELA3A
Gene Alias	ELA3
Gene Description	elastase 3A, pancreatic
Gene Ontology	Hyperlink
Gene Summary	<p>Elastases form a subfamily of serine proteases that hydrolyze many proteins in addition to elastin. Humans have six elastase genes which encode the structurally similar proteins elastase 1, 2, 2A, 2B, 3A, and 3B. Unlike other elastases, elastase 3A has little elastolytic activity. Like most of the human elastases, elastase 3A is secreted from the pancreas as a zymogen and, like other serine proteases such as trypsin, chymotrypsin and kallikrein, it has a digestive function in the intestine. Elastase 3A preferentially cleaves proteins after alanine residues. Elastase 3A may also function in the intestinal transport and metabolism of cholesterol. Both elastase 3A and elastase 3B have been referred to as protease E and as elastase 1. [provided by RefSeq</p>
Other Designations	OTTHUMP00000002835 elastase 1 protease E