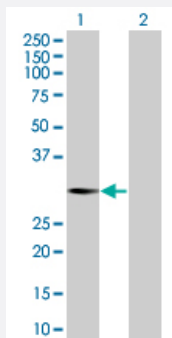


BCAP31 293T Cell Transient Overexpression Lysate(Denatured)

Catalog # H00010134-T01

Size 100 uL

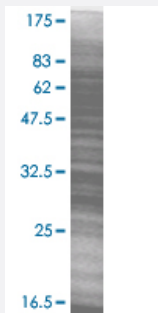
Applications



Western Blot

Lane 1: BCAP31 transfected lysate (28 KDa)

Lane 2: Non-transfected lysate.



SDS-PAGE Gel

BCAP31 transfected lysate.

Specification

| | |
|-------------------------------|-------------------------|
| Transfected Cell Line | 293T |
| Plasmid | pCMV-BCAP31 full-length |
| Host | Human |
| Theoretical MW (kDa) | 27.17 |
| Interspecies Antigen Sequence | Mouse (90); Rat (91) |

Quality Control Testing

Transient overexpression cell lysate was tested with Anti-BCAP31 antibody ([H00010134-B01](#)) by Western Blots.

Western Blot

Lane 1: BCAP31 transfected lysate (28 KDa)

Lane 2: Non-transfected lysate.

SDS-PAGE Gel

BCAP31 transfected lysate.

Storage Buffer

1X Sample Buffer (50 mM Tris-HCl, 2% SDS, 10% glycerol, 300 mM 2-mercaptoethanol, 0.01% Bromophenol blue)

Storage Instruction

Store at -80°C. Aliquot to avoid repeated freezing and thawing.

Applications

- Western Blot

Gene Info — BCAP31

Entrez GeneID[10134](#)**GeneBank Accession#**[NM_005745](#)**Protein Accession#**[NP_005736](#)**Gene Name**

BCAP31

Gene Alias

6C6-AG, BAP31, CDM, DXS1357E

Gene Description

B-cell receptor-associated protein 31

Omim ID[300398](#)**Gene Ontology**[Hyperlink](#)**Gene Summary**

This gene encodes a member of the B-cell receptor associated protein 31 superfamily. The encoded protein is a multi-pass transmembrane protein of the endoplasmic reticulum that is involved in the anterograde transport of membrane proteins from the endoplasmic reticulum to the Golgi and in the caspase 8-mediated apoptosis. Microdeletions in this gene are associated with the contiguous ABCD1/DXS1375E deletion syndrome. Two pseudogenes have been identified on chromosome 16. Alternatively spliced transcript variants encoding distinct isoforms have been described although the biological validity of some of the variants has not been determined. [provided by RefSeq]

Other Designations

6C6 antigen|BCR-associated protein Bap31|OTTHUMP00000025977|OTTHUMP00000025978|p28 Bap31