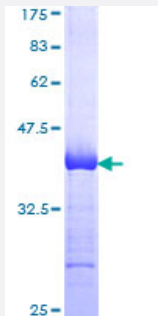


# BCAP31 (Human) Recombinant Protein (Q01)

Catalog # H00010134-Q01

Size 25 ug, 10 ug

## Applications



## Specification

<b>Product Description</b>	Human BCAP31 partial ORF ( NP_005736, 137 a.a. - 246 a.a.) recombinant protein with GST-tag at N-terminal.
<b>Sequence</b>	KKQAESASEAAKKYMEENDQLKKGAAVDGGKLDVGNAEVKLEEEENRSLKADLQKLKDELASTK QKLEKAENQVLAMRKQSEGLTKEYDRLLLEEHAKLQAAVDGPMDKKEE
<b>Host</b>	Wheat Germ (in vitro)
<b>Theoretical MW (kDa)</b>	37.84
<b>Interspecies Antigen Sequence</b>	Mouse (90); Rat (91)
<b>Preparation Method</b>	<a href="#">in vitro wheat germ expression system</a>
<b>Purification</b>	Glutathione Sepharose 4 Fast Flow
<b>Quality Control Testing</b>	12.5% SDS-PAGE Stained with Coomassie Blue.
<b>Storage Buffer</b>	50 mM Tris-HCl, 10 mM reduced Glutathione, pH=8.0 in the elution buffer.
<b>Storage Instruction</b>	Store at -80°C. Aliquot to avoid repeated freezing and thawing.
<b>Note</b>	Best use within three months from the date of receipt of this protein.

## Applications

- Enzyme-linked Immunoabsorbent Assay
- Western Blot (Recombinant protein)
- Antibody Production
- Protein Array

## Gene Info — BCAP31

Entrez GeneID [10134](#)

GeneBank Accession# [NM\\_005745](#)

Protein Accession# [NP\\_005736](#)

Gene Name BCAP31

Gene Alias 6C6-AG, BAP31, CDM, DXS1357E

Gene Description B-cell receptor-associated protein 31

Omim ID [300398](#)

Gene Ontology [Hyperlink](#)

**Gene Summary** This gene encodes a member of the B-cell receptor associated protein 31 superfamily. The encoded protein is a multi-pass transmembrane protein of the endoplasmic reticulum that is involved in the anterograde transport of membrane proteins from the endoplasmic reticulum to the Golgi and in the caspase 8-mediated apoptosis. Microdeletions in this gene are associated with the contiguous ABCD1/DXS1375E deletion syndrome. Two pseudogenes have been identified on chromosome 16. Alternatively spliced transcript variants encoding distinct isoforms have been described although the biological validity of some of the variants has not been determined. [provided by RefSeq]

**Other Designations** 6C6 antigen|BCR-associated protein Bap31|OTTHUMP00000025977|OTTHUMP00000025978|p28 Bap31