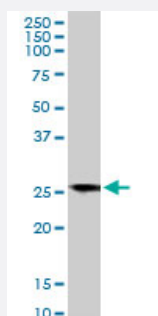


BCAP31 monoclonal antibody (M01), clone 3C5

Catalog # H00010134-M01

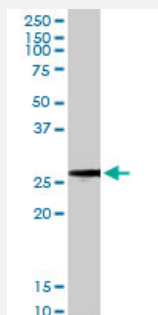
Size 50 ug

Applications



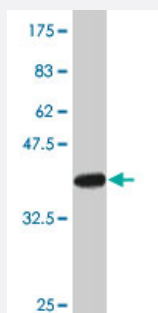
Western Blot (Tissue lysate)

BCAP31 monoclonal antibody (M01), clone 3C5. Western Blot analysis of BCAP31 expression in human kidney.



Western Blot (Cell lysate)

BCAP31 monoclonal antibody (M01), clone 3C5. Western Blot analysis of BCAP31 expression in HeLa (Cat # L013V1).



Western Blot detection against Immunogen (37.84 kDa).

Specification

Product Description

Mouse monoclonal antibody raised against a partial recombinant BCAP31.

Immunogen	BCAP31 (NP_005736, 137 a.a. ~ 246 a.a) partial recombinant protein with GST tag. MW of the GST tag alone is 26 KDa.
Sequence	KKQAESASEAAKKYMEENDQLKKGAAVDGGKLDVGNAEVKLEEEENRSLKADLQKLKDELASTKQKLEKAENQVLAMRKQSEGLTKEYDRLLLEEHAKLQAAVDGPMDKKEE
Host	Mouse
Reactivity	Human
Interspecies Antigen Sequence	Mouse (90); Rat (91)
Isotype	IgG1 Kappa
Quality Control Testing	Antibody Reactive Against Recombinant Protein. Western Blot detection against Immunogen (37.84 KDa) .
Storage Buffer	In 1x PBS, pH 7.4
Storage Instruction	Store at -20°C or lower. Aliquot to avoid repeated freezing and thawing.

Applications

- Western Blot (Tissue lysate)

BCAP31 monoclonal antibody (M01), clone 3C5. Western Blot analysis of BCAP31 expression in human kidney.

[Protocol Download](#)

- Western Blot (Cell lysate)

BCAP31 monoclonal antibody (M01), clone 3C5. Western Blot analysis of BCAP31 expression in HeLa(Cat # L013V1).

[Protocol Download](#)

- Western Blot (Recombinant protein)

[Protocol Download](#)

- ELISA

Gene Info — BCAP31

Entrez GeneID [10134](#)

GeneBank Accession#	NM_005745
Protein Accession#	NP_005736
Gene Name	BCAP31
Gene Alias	6C6-AG, BAP31, CDM, DXS1357E
Gene Description	B-cell receptor-associated protein 31
Omim ID	300398
Gene Ontology	Hyperlink
Gene Summary	<p>This gene encodes a member of the B-cell receptor associated protein 31 superfamily. The encoded protein is a multi-pass transmembrane protein of the endoplasmic reticulum that is involved in the anterograde transport of membrane proteins from the endoplasmic reticulum to the Golgi and in the caspase 8-mediated apoptosis. Microdeletions in this gene are associated with the contiguous ABCD1/DXS1375E deletion syndrome. Two pseudogenes have been identified on chromosome 16. Alternatively spliced transcript variants encoding distinct isoforms have been described although the biological validity of some of the variants has not been determined. [provided by RefSeq]</p>
Other Designations	6C6 antigen BCR-associated protein Bap31 OTTHUMP00000025977 OTTHUMP00000025978 p28 Bap31