

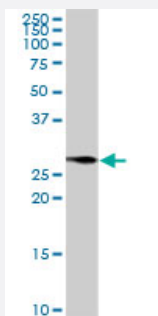
MaxPab®

## BCAP31 purified MaxPab rabbit polyclonal antibody (D01P)

Catalog # H00010134-D01P

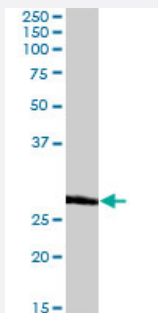
Size 100 ug

### Applications



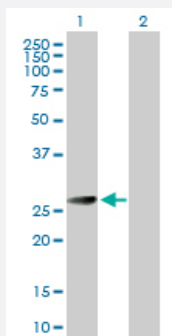
#### Western Blot (Tissue lysate)

BCAP31 MaxPab rabbit polyclonal antibody. Western Blot analysis of BCAP31 expression in mouse intestine.



#### Western Blot (Tissue lysate)

BCAP31 MaxPab rabbit polyclonal antibody. Western Blot analysis of BCAP31 expression in human spleen.



#### Western Blot (Transfected lysate)

Western Blot analysis of BCAP31 expression in transfected 293T cell line ([H00010134-T01](#)) by BCAP31 MaxPab polyclonal antibody.

Lane 1: BCAP31 transfected lysate(28.00 KDa).

Lane 2: Non-transfected lysate.

### Specification

#### Product Description

Rabbit polyclonal antibody raised against a full-length human BCAP31 protein.

Immunogen	BCAP31 (NP_005736.3, 1 a.a. ~ 246 a.a) full-length human protein.
Sequence	MSLQWTAVATFLYAEV FVLLLCIPFISPKRWQKIFKSRLVELLVSYGNTFFVVLVILVLLVIDAVREI RKYDDVTEKVN LQNNPGAMEHFHMKLFRAQRNLYAGFSLLLSFLLRRLVTLISQQATLLASNEAF KKQAESASEAAKKYMEENDQLKKGA AVDGGKLDVGNAEVKLEEENRSLKADLQKLKDELASTK QKLEKAENQVLAMRKQSEGLTKEYDRLL EEHAKLQAAVDGPMDKKEE
Host	Rabbit
Reactivity	Human, Mouse
Interspecies Antigen Sequence	Mouse (90); Rat (91)
Quality Control Testing	Antibody reactive against mammalian transfected lysate.
Storage Buffer	In 1x PBS, pH 7.4
Storage Instruction	Store at -20°C or lower. Aliquot to avoid repeated freezing and thawing.

## Applications

- Western Blot (Tissue lysate)

BCAP31 MaxPab rabbit polyclonal antibody. Western Blot analysis of BCAP31 expression in mouse intestine.

[Protocol Download](#)

- Western Blot (Tissue lysate)

BCAP31 MaxPab rabbit polyclonal antibody. Western Blot analysis of BCAP31 expression in human spleen.

[Protocol Download](#)

- Western Blot (Transfected lysate)

Western Blot analysis of BCAP31 expression in transfected 293T cell line ([H00010134-T01](#)) by BCAP31 MaxPab polyclonal antibody.

Lane 1: BCAP31 transfected lysate(28.00 KDa).

Lane 2: Non-transfected lysate.

[Protocol Download](#)

## Gene Info — BCAP31

Entrez GeneID [10134](#)

GeneBank Accession#	<a href="#">NM_005745</a>
Protein Accession#	<a href="#">NP_005736.3</a>
Gene Name	BCAP31
Gene Alias	6C6-AG, BAP31, CDM, DXS1357E
Gene Description	B-cell receptor-associated protein 31
Omim ID	<a href="#">300398</a>
Gene Ontology	<a href="#">Hyperlink</a>
Gene Summary	<p>This gene encodes a member of the B-cell receptor associated protein 31 superfamily. The encoded protein is a multi-pass transmembrane protein of the endoplasmic reticulum that is involved in the anterograde transport of membrane proteins from the endoplasmic reticulum to the Golgi and in the caspase 8-mediated apoptosis. Microdeletions in this gene are associated with the contiguous ABCD1/DXS1375E deletion syndrome. Two pseudogenes have been identified on chromosome 16. Alternatively spliced transcript variants encoding distinct isoforms have been described although the biological validity of some of the variants has not been determined. [provided by RefSeq]</p>
Other Designations	6C6 antigen BCR-associated protein Bap31 OTTHUMP00000025977 OTTHUMP00000025978 p28 Bap31