

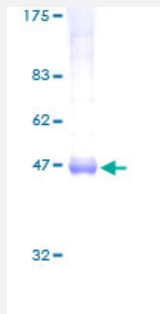
Full-Length

ARL4A (Human) Recombinant Protein (P01)

Catalog # H00010124-P01

Size 10 ug, 25 ug

Applications



Specification

Product Description	Human ARL4A full-length ORF (AAH01111, 1 a.a. - 200 a.a.) recombinant protein with GST-tag at N-terminal.
Sequence	MGNGLSDQTSILSNLPSFQSFHVLGLDCAGKTTVLRLQFNEFVNTVPTKGFNTEKIKVTLGNSKT VTFHFWDVGGQEKLRPLWKS YTRCTDGMFVVDSDVERMEEAKTELHKITRISENQGVPLIVAN KQDLRNSLSLSEIEKLLAMGELSSSTPWHLQPTCAIGDGLKEGLEKLHDMIIKRRKMLRQQKKKR
Host	Wheat Germ (in vitro)
Theoretical MW (kDa)	47.74
Interspecies Antigen Sequence	Mouse (99); Rat (99)
Preparation Method	in vitro wheat germ expression system
Purification	Glutathione Sepharose 4 Fast Flow
Quality Control Testing	12.5% SDS-PAGE Stained with Coomassie Blue.
Storage Buffer	50 mM Tris-HCl, 10 mM reduced Glutathione, pH=8.0 in the elution buffer.
Storage Instruction	Store at -80°C. Aliquot to avoid repeated freezing and thawing.

Note

Best use within three months from the date of receipt of this protein.

Applications

- Enzyme-linked Immunoabsorbent Assay
- Western Blot (Recombinant protein)
- Antibody Production
- Protein Array

Gene Info — ARL4A

Entrez GeneID [10124](#)**GeneBank Accession#** [BC001111](#)**Protein Accession#** [AAH01111](#)**Gene Name** ARL4A**Gene Alias** ARL4**Gene Description** ADP-ribosylation factor-like 4A**Omim ID** [604786](#)**Gene Ontology** [Hyperlink](#)

Gene Summary ADP-ribosylation factor-like 4A is a member of the ADP-ribosylation factor family of GTP-binding proteins. ARL4A is similar to ARL4C and ARL4D and each has a nuclear localization signal and an unusually high guanine nucleotide exchange rate. ARL4A is located in both the nuclear and extranuclear cell compartments. Multiple transcript variants encoding the same protein have been found for this gene. [provided by RefSeq]

Other Designations ADP-ribosylation factor-like 4|OTTHUMP00000155200