

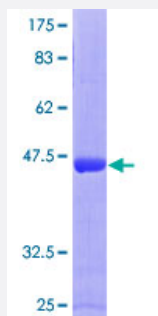
Full-Length

ARL4C (Human) Recombinant Protein (P01)

Catalog # H00010123-P01

Size 25 ug, 10 ug

Applications



Specification

Product Description	Human ARL4C full-length ORF (NP_005728.2, 1 a.a. - 192 a.a.) recombinant protein with GST-tag at N-terminal.
Sequence	MGNISSNISAFQSLHVM/LGLDSAGKTTVLRLKFNEFVNTVPTIGFNTEKIKLSNGTAKGISCHFWD VGGQEKLRLPLWKSYSRCTDGIYVDSVDVDRLEEAKTELHKVTKFAENQGTPLLVIANKQDLPKS LPVAEIEKQLALHELIPATTYHVQPACAIIGELTEGMDKLYEMILKRRKSLKQKKKR
Host	Wheat Germ (in vitro)
Theoretical MW (kDa)	47.9
Interspecies Antigen Sequence	Mouse (100)
Preparation Method	in vitro wheat germ expression system
Purification	Glutathione Sepharose 4 Fast Flow
Quality Control Testing	12.5% SDS-PAGE Stained with Coomassie Blue.
Storage Buffer	50 mM Tris-HCl, 10 mM reduced Glutathione, pH=8.0 in the elution buffer.
Storage Instruction	Store at -80°C. Aliquot to avoid repeated freezing and thawing.

Note

Best use within three months from the date of receipt of this protein.

Applications

- Enzyme-linked Immunoabsorbent Assay
- Western Blot (Recombinant protein)
- Antibody Production
- Protein Array

Gene Info — ARL4C

Entrez GeneID [10123](#)**GeneBank Accession#** [NM_005737.3](#)**Protein Accession#** [NP_005728.2](#)**Gene Name** ARL4C**Gene Alias** ARL7, LAK**Gene Description** ADP-ribosylation factor-like 4C**Omim ID** [604787](#)**Gene Ontology** [Hyperlink](#)

Gene Summary ADP-ribosylation factor-like 4C is a member of the ADP-ribosylation factor family of GTP-binding proteins. ARL4C is closely similar to ARL4A and ARL4D and each has a nuclear localization signal and an unusually high guanine nucleotide exchange rate. This protein may play a role in cholesterol transport. [provided by RefSeq]

Other Designations ADP ribosylation factor-like protein 7|ADP-ribosylation factor-like 7|OTTHUMP00000164395