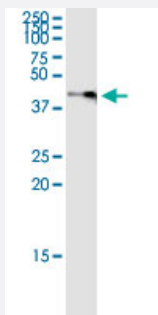


SGK2 (Human) IP-WB Antibody Pair

Catalog # H00010110-PW3

Size 1 Set

Applications



Immunoprecipitation of SGK2 transfected lysate using rabbit polyclonal anti-SGK2 and Protein A Magnetic Bead ([U0007](#)), and immunoblotted with mouse purified polyclonal anti-SGK2.

Specification

Product Description	This IP-WB antibody pair set comes with one antibody for immunoprecipitation and another to detect the precipitated protein in western blot.
Reactivity	Human
Quality Control Testing	Immunoprecipitation-Western Blot (IP-WB) Immunoprecipitation of SGK2 transfected lysate using rabbit polyclonal anti-SGK2 and Protein A Magnetic Bead (U0007), and immunoblotted with mouse purified polyclonal anti-SGK2.
Supplied Product	Antibody pair set content: 1. Antibody pair for IP: rabbit polyclonal anti-SGK2 (300 ul) 2. Antibody pair for WB: mouse purified polyclonal anti-SGK2 (50 ug)
Storage Instruction	Store reagents of the antibody pair set at -20°C or lower. Please aliquot to avoid repeated freeze thaw cycle. Reagents should be returned to -20°C storage immediately after use.

Applications

- Immunoprecipitation-Western Blot

[Protocol Download](#)

Gene Info — SGK2

Entrez GeneID [10110](#)**Gene Name** SGK2**Gene Alias** H-SGK2, dJ138B7.2**Gene Description** serum/glucocorticoid regulated kinase 2**Omim ID** [607589](#)**Gene Ontology** [Hyperlink](#)

Gene Summary This gene encodes a serine/threonine protein kinase. Although this gene product is similar to serum- and glucocorticoid-induced protein kinase (SGK), this gene is not induced by serum or glucocorticoids. This gene is induced in response to signals that activate phosphatidylinositol 3-kinase, which is also true for SGK. Two alternate transcripts encoding two different isoforms have been described. [provided by RefSeq]

Other Designations OTTHUMP00000031702|OTTHUMP00000031703|OTTHUMP00000031705