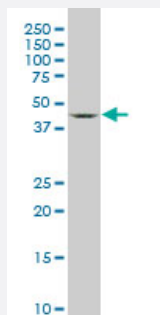


# SGK2 monoclonal antibody (M05), clone 4G4

Catalog # H00010110-M05

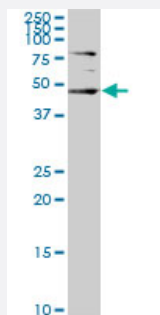
Size 100 ug

## Applications



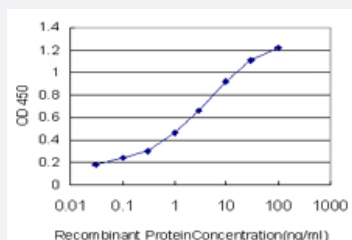
### Western Blot (Cell lysate)

SGK2 monoclonal antibody (M05), clone 4G4. Western Blot analysis of SGK2 expression in Raw 264.7.



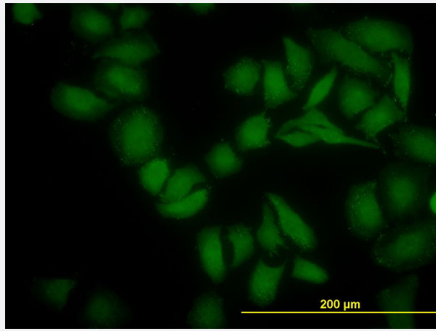
### Western Blot (Cell lysate)

SGK2 monoclonal antibody (M05), clone 4G4. Western Blot analysis of SGK2 expression in HepG2 ( Cat # L019V1 ).



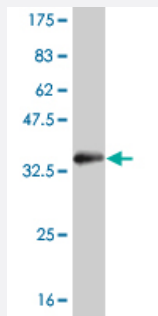
### Sandwich ELISA (Recombinant protein)

Detection limit for recombinant GST tagged SGK2 is approximately 0.1ng/ml as a capture antibody.



## Immunofluorescence

Immunofluorescence of monoclonal antibody to SGK2 on HeLa cell. [antibody concentration 10 ug/ml]



Western Blot detection against Immunogen (33.88 KDa) .

## Specification

<b>Product Description</b>	Mouse monoclonal antibody raised against a partial recombinant SGK2.
<b>Immunogen</b>	SGK2 (AAH65511, 293 a.a. ~ 367 a.a) partial recombinant protein with GST tag. MW of the GST tag alone is 26 KDa.
<b>Sequence</b>	SPINWDDLYHKRLTPPFNPNVTGPADLKHFDPEFTQEAVSKSIGCTPDTVASSSGASSAFLGFSY APEDDDILDC
<b>Host</b>	Mouse
<b>Reactivity</b>	Human, Mouse
<b>Isotype</b>	IgG3 Kappa
<b>Quality Control Testing</b>	Antibody Reactive Against Recombinant Protein. Western Blot detection against Immunogen (33.88 KDa) .
<b>Storage Buffer</b>	In 1x PBS, pH 7.4
<b>Storage Instruction</b>	Store at -20°C or lower. Aliquot to avoid repeated freezing and thawing.

## Applications

- Western Blot (Cell lysate)

SGK2 monoclonal antibody (M05), clone 4G4. Western Blot analysis of SGK2 expression in Raw 264.7.

[Protocol Download](#)

- Western Blot (Cell lysate)

SGK2 monoclonal antibody (M05), clone 4G4. Western Blot analysis of SGK2 expression in HepG2 ( Cat # L019V1 ).

[Protocol Download](#)

- Western Blot (Recombinant protein)

[Protocol Download](#)

- Sandwich ELISA (Recombinant protein)

Detection limit for recombinant GST tagged SGK2 is approximately 0.1ng/ml as a capture antibody.

[Protocol Download](#)

- ELISA

- Immunofluorescence

Immunofluorescence of monoclonal antibody to SGK2 on HeLa cell. [antibody concentration 10 ug/ml]

## Gene Info — SGK2

Entrez GeneID	<a href="#">10110</a>
---------------	-----------------------

GeneBank Accession#	<a href="#">BC065511</a>
---------------------	--------------------------

Protein Accession#	<a href="#">AAH65511</a>
--------------------	--------------------------

Gene Name	SGK2
-----------	------

Gene Alias	H-SGK2, dJ138B7.2
------------	-------------------

Gene Description	serum/glucocorticoid regulated kinase 2
------------------	---

Omim ID	<a href="#">607589</a>
---------	------------------------

Gene Ontology	<a href="#">Hyperlink</a>
---------------	---------------------------

**Gene Summary**

This gene encodes a serine/threonine protein kinase. Although this gene product is similar to serum- and glucocorticoid-induced protein kinase (SGK), this gene is not induced by serum or glucocorticoids. This gene is induced in response to signals that activate phosphatidylinositol 3-kinase, which is also true for SGK. Two alternate transcripts encoding two different isoforms have been described. [provided by RefSeq]

**Other Designations**

OTTHUMP00000031702|OTTHUMP00000031703|OTTHUMP00000031705